

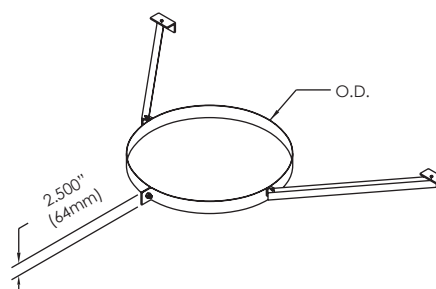
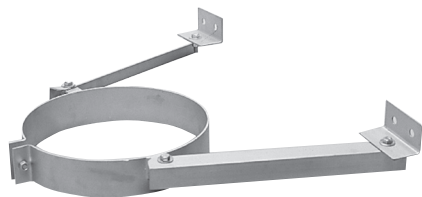
TECHNICAL DATA SHEET

WALL BAND • WB

Used to stabilize the chimney along a vertical wall. The maximum recommended spacing between wall bands is 10'-0" (3048mm).

Includes:

- 1 Wall brackets
- 1 Stabilizing angles



AVAILABLE FOR MODELS:

IPP/IPPL/IPPL2/IPPL2F/IPPL4F

HEP/HEPL/HEPL2

GDP/GDPL/GDPL2F/GDPL4F