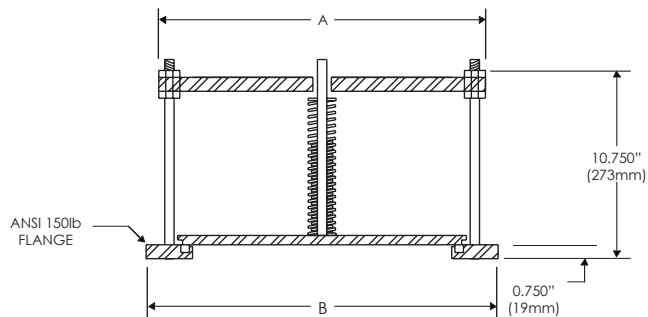


TECHNICAL DATA SHEET

RELIEF VALVE • RV

Relief valves are for utilization in reciprocating engine exhaust systems to minimize damage caused by engine backfire. They are commonly used to protect exhaust systems where factory-insulated engine exhaust silencers, catalytic converters and/or waste heat recovery units are used. Relief valves are set to open at exhaust pressure exceeding approximately one (1) PSIG (27.7" of water column). An optional additional tension spring is available to increase opening pressure to approximately 48.5" W.C. or greater. Relief valves are recommended in accordance with NFPA 37.



I.D.		A		B		# of springs
in	mm	in	mm	in	mm	
6	152	9.625	244	11.000	279	1
8	203	12.250	311	13.500	343	1
10	254	14.000	356	16.000	406	1
12	305	16.750	425	19.000	483	2
14	356	18.250	464	21.000	533	2
16	406	20.250	514	23.500	597	3
18	457	22.250	565	25.000	635	3
20	508	24.250	616	27.500	699	4
22	559	26.250	667	29.000	737	4
24	610	28.500	724	32.000	813	4