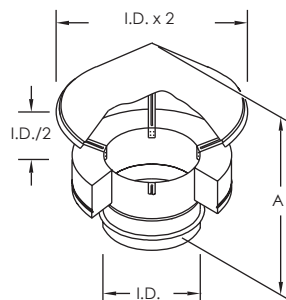


# TECHNICAL DATA SHEET

## RAIN CAP • RC

Installed at the top of the chimney. It prevents entry of rain.

K = 0.5



SINGLE WALL			
I.D.		A	
in	mm	in	mm
6	152	12.500	318
8	203	13.500	343
10	254	15.500	394
12	305	17.500	445
14	356	19.500	495
16	406	21.500	546
18	457	23.500	597
20	508	25.500	648
22	559	27.500	699
24	610	29.500	749

DOUBLE WALL - 2" AND 4"			
I.D.		A	
in	mm	in	mm
6	152	11.500	292
8	203	13.500	343
10	254	15.500	394
12	305	17.500	445
14	356	19.500	495
16	406	21.500	546
18	457	23.500	597
20	508	25.500	648
22	559	27.500	699
24	610	29.500	749
26	660	31.500	800
28	711	33.500	851
30	762	35.500	902
32	813	37.500	953
34	864	39.500	1003
36	914	41.500	1054
38	965	43.500	1105
40	1016	45.500	1156
42	1067	47.500	1207
44	1118	49.500	1257
46	1168	51.500	1308
48	1219	53.500	1359

**AVAILABLE FOR MODELS:**

**IPP/IPPL/IPPL2/IPPL2F/IPPL4F**

**HEP/HEPL/HEPL2**

**GDP/GDPL/GDPL2F/GDPL4F**