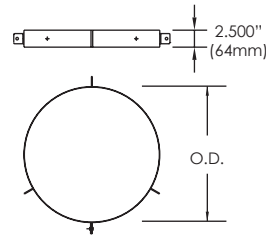


TECHNICAL DATA SHEET

GUY WIRE BAND • GWB

Used to stabilize a chimney laterally where it extends more than 10'-0" (3048mm) above the roof or for locations exposed to strong winds. It is attached to the chimney and is designed to receive 3 guy wires 120° apart (not included). It may be manufactured to receive 4 guy wires 90° apart.



AVAILABLE FOR MODELS:

IPP/IPPL/IPPL2/IPPL2F/IPPL4F

HEP/HEPL/HEPL2

GDP/GDPL/GDPL2F/GDPL4F