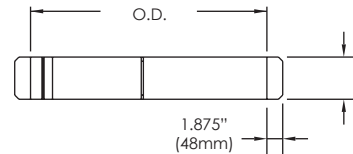
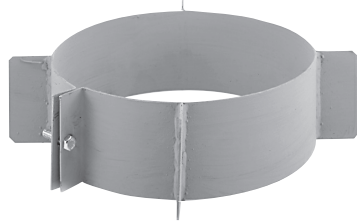


TECHNICAL DATA SHEET

GUIDING SPACER • GS

Used to guide the flue or the chimney against the inner wall of the sleeves it passes through. It holds the chimney at a distance of 2" (51 mm) from the wall firestop (WFS), insulated wall firestop (IFS) or an insulated sleeve (IS).



SINGLE WALL			
I.D.		A	
in	mm	in	mm
6" to 16"	152 to 406	4.000	102
18" to 24"	457 to 610	6.000	152

DOUBLE WALL - 2"		DOUBLE WALL - 4"		A	
I.D.		I.D.			
in	mm	in	mm	in	mm
6" to 16"	152 to 406	10" to 20"	254 to 508	4.000	102
18" to 36"	457 to 914	22" to 40"	559 to 1016	6.000	152
38" to 48"	965 to 1219	42" to 52"	1067 to 1321	8.000	203

AVAILABLE FOR MODELS:

IPP/IPPL/IPPL2/IPPL2F/IPPL4F

HEP/HEPL/HEPL2

GDP/GDPL/GDPL2F/GDPL4F