

Lining CHEMINÉE

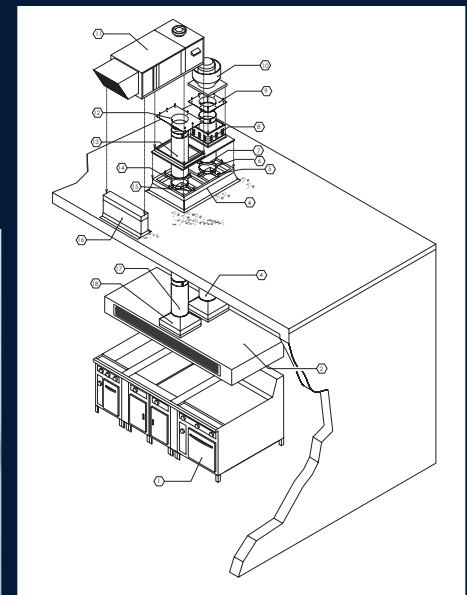
GREASE DUCT SYSTEM

Industrial Positive Pressure Piping Systems

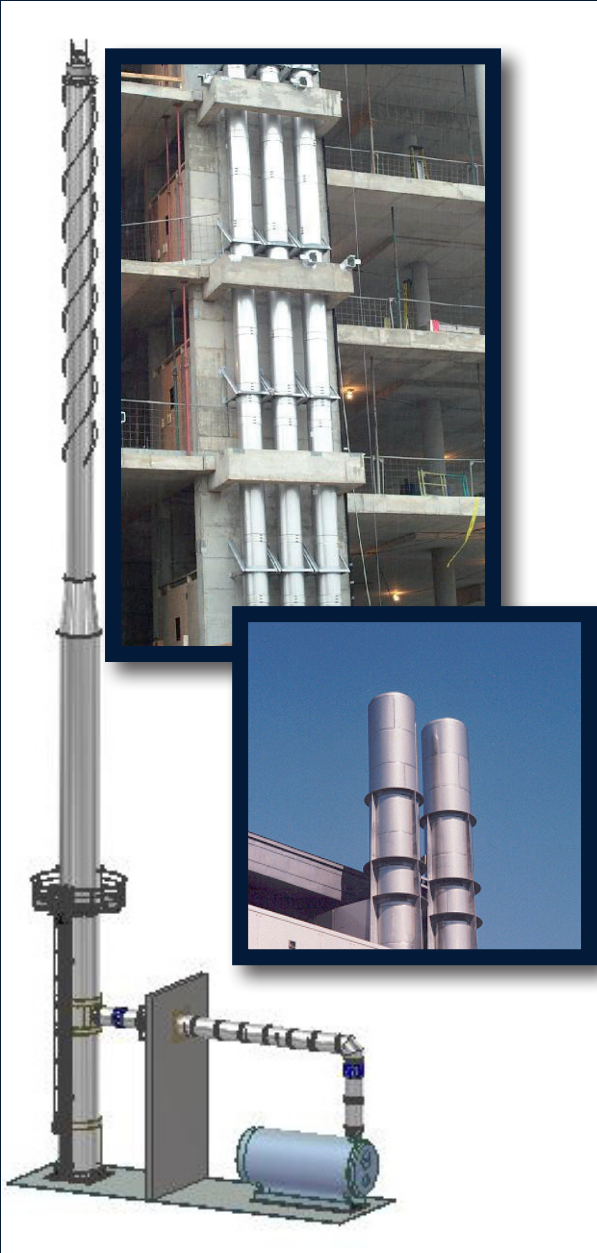
**Complete Guide for Parts
Identification and Selection**

MODELS

GDP • GDPL • GDPL2F • GDPL4F



Our mission is to become the supplier of choice for gas venting products and solutions.



Company Profile

Cheminée Lining started out as a sales company that provided customers with quality products and installation. Our manufacturing arose from the certitude that we could supply superior products and services at a reasonable price.

With more than 15 years experience, our principles based on business integrity, first class customer service, reliable delivery and engineering services have established our reputation as a market leader for the supply of chimneys, grease duct and gas venting products.

Personnel

Cheminée Lining can count on qualified and highly professional employees. We are continually seeking to develop superior quality products at a competitive price.

Our engineering department will supply the answers you need – either for a project involving our standard line of products or a uniquely designed response to a specific requirement. We have developed specialized design systems for highly efficient results on sizing analysis and CAD design.

Our capabilities not only encompass the design and manufacturing of gas venting products, but also include full range engineering expertise to assist you in your projects, from specification to installation. Cheminée Lining sales personnel work in an environment that promotes entrepreneurship. Their experience in the field allows them to utilize their resources to provide our clients with the best technical and economical solutions.

Manufacturing

Cheminée Lining combines the craftsmanship of a seasoned labor force with state of the art fabrication, delivering the highest quality products in the industry.

Our stainless steel precision cut using state of the art equipment for quality, speed and accuracy resulting in reduced manufacturing lead times.

An innovative engineering staff ensures continuing research and design, so that Cheminée Lining can offer the latest in gas venting products.



CONTENTS

SECTION A

- LISTING AND APPLICATIONS4

SECTION B

- FEATURES AND BENEFITS5

SECTION C

- TECHNICAL DATA7

SECTION D

• COMPONENTS

- Lengths9
- Tees11
- Elbows16
- Fittings21
- Support23
- Guides26
- Firestops28
- Bands31
- Collars32
- Flashings32
- Terminations35

SECTION E

- SPECIAL PARTS37

SECTION F

- INSTALLATION38

LISTING AND APPLICATIONS

LISTINGS

CHEMINÉE LINING, E Inc. venting systems models GDP, GDPL, GDPL2F and GDPL4F are listed by Underwriters Laboratories, Inc. (UL) under file MH26661 and tested in accordance with UL 1978 standard for grease duct. These requirements cover grease duct and grease assemblies that are intended to be installed with less than or greater than 18" clearance as specified in the standard for removal of smoke and Grease-laden Vapors from Commercial Cooking Equipment, NFPA 96 or the individual listing intended for installations where the duct passes through partitions or walls of combustible material or where the duct is located in proximity to combustible building construction



UL 1978

| MODEL GDPL, GDPL2F AND GDPL4F | TEMPERATURE | SIZE |
|-------------------------------|------------------|----------------|
| Grease Duct | 500°F continuous | 6" to 48" I.D. |

TESTING

CHEMINÉE LINING, E Inc. resources include a test facility specially created to develop, test and demonstrate grease duct fire and leakage resistance. Test were conducted in the presence of UL inspectors according to UL 1978 standard for grease ducts.

APPLICATIONS

- Grease duct models GDP, GDPL, GDPL2F and GDPL4F are suitable for use in installation using exhaust system components for the removal of smoke and grease laden vapors in commercial, industrial, institutional and similar type applications.
- Models GDP, GDPL, GDPL2F and GDPL4F grease duct are intended for use as complete systems.
- They can be connected to hoods, grease extractors, upblast exhasuter, in-lin or utility fans used in restaurants hotels and other food service application. They can also serve as supply duct in make-up/exhaust type systems.
- installation of GDP, GDPL, GDPL2F and GDPL4F grease duct is made in accordance with CHEMINÉE LINING.E Inc. installation instructions manual and NFPA 96 " standard for Ventilation Control and Fire Protection of Commercial Cooking Operations".
- GDP, GDPL, GDPL2F and GDPL4F grease duct are suitable for continuous operation at temperatures not exceeding 500°F (260°C).

Other products and applications

| CRITERIA | GREASE DUCT | BHA CHIMNEY | 1400°F CHIMNEY |
|---|--|--|---|
| Application | Cooking appliances ventilation hoods res- taurant grease ducts pizza oven exhausts. | <ul style="list-style-type: none"> • Low and high pressure steam boilers • Diesel and turbine exhausts • Building heating equipment | <ul style="list-style-type: none"> • Industrial furnaces • Processing equipment • Kilns and ovens • Diesel and turbine exhausts |
| Continuous operating temperature | 500°F | 1000°F | 1400°F |
| IPPL, GDPL | Yes | Yes | Yes |
| IPPL2 | Yes | Yes | N/A |
| IPPL2F, GDPL2F | N/A | Yes | Yes |
| IPPL4F, GDPL4F | Yes | Yes | N/A |

DESIGN AND SPECIFICATION

DESIGN

All our double wall chimney systems are part of a large family of IPP (Industrial Positive Pressure) products for industrial and commercial applications. The components of each model are made using the same continuous laser welding stainless steel inner wall. Since all components have the same small and large ends, the parts of all models fit into one another, thus eliminating the need for all kinds of adapters and providing an incomparable flexibility in selecting models of flues and chimneys.



IPP, GDP: Single wall
(see Chimney Breechings and Liners Catalogue)



IPPL, GDPL : Double wall
with 2" air space



IPPL2: Double wall
with 2" mineral fiber insul.



IPPL2F, GDPL2F: Double wall
with 2" ceramic fiber insul.



IPPL4F, GDPL4F: Double wall
with 4" ceramic fiber insul.

This unique method for jointing components together is very efficient either in horizontal or in vertical installations. Our simple jointing concept along with the wide variety of components and accessories allows for a quick and simple installation, thus permitting you to save both time and money.

Cheminée Lining is proud of their industrial positive pressure piping systems. Recognized for being high quality products, they are also the easiest to install on the market!

These chimney systems are designed for exhaust of combustion gases, under positive, negative or neutral pressure, emanating from a variety of appliances including but not limited to:

- Diesel Engine and Gas Turbine Exhaust
- Restaurant Grease Duct
- Incinerator
- Coffee Roaster
- Air and Product containment
- Industrial Oven Exhaust
- Boiler Negative and Positive Pressure
- Unit Heater
- Heat Recovery

Models GDP, GDPL and GDPL2F provide a wide variety of components and accessories, suitable for all kinds of site conditions, thus allowing for quick and simple installation. Each component is packed and shipped complete, with (1) one assembly band and (1) one finishing band for those having large ends. Sufficient tubes of appropriate sealant are also included in the shipment for completing the assembly.

SAMPLE SPECIFICATION (boiler Exhaust)

The grease duct and conduit must meet UL (Underwriters Laboratories Inc.) and c-UL (Underwriters Laboratories of Canada inc.) standards and carry the appropriate approval labels. The maximum temperature must be 500°F (260°C) for continuous operation and the grease duct must have been tested to withstand a 2000°F (1094°C) temperature for thirty minutes.

The grease duct and conduit components must be of double wall construction and properly designed for positive pressure exhaust. The inner wall must be of 20 gauge 304 stainless steel, with continuous plasma welds. The outer wall must be of 24 gauge 304 stainless steel. A ceramic fiber insulation (2 in.) must be installed between walls. The jointing must be made using the assembly band, the finishing band and the appropriate sealing material, as supplied by the manufacturer. Quality required : Model GDPL2F.

All components must be installed according to the manufacturer recommendations and must meet the NFPA and local safety code requirements.

MATERIALS

MODEL GDP

Wall: 316L or 304 2B stainless steel (20 ga - 6" (152mm) to 40" (1016mm) diameter; 18 ga - 42" (1067mm) to 48" (1219mm) diameter)

MODEL GDPL

Inner wall: 316L or 304 2B stainless steel (20 ga - 6" (152mm) to 40" (1016mm) diameter; 18 ga - 42" (1067mm) to 48" (1219mm) diameter)

Outer wall: 301,316L, 304 2B stainless steel, 430 or galvalume (24 ga - 6" (152mm) to 40" (1016mm) diameter; 20 ga - 42" (1067mm) to 48" (1219mm) diameter)

Insulation: 2" (51mm) air space

MODEL GDPL2F

Inner wall: 316L or 304 2B stainless steel (20 ga - 6" (152mm) to 40" (1016mm) diameter; 18 ga - 42" (1067mm) to 48" (1219mm) diameter)

Outer wall: 301,316L, 304 2B stainless steel, 430 or galvalume (24 ga - 6" (152mm) to 40" (1016mm) diameter; 20 ga - 42" (1067mm) to 48" (1219mm) diameter)

Insulation: 2" (51mm) high temperature ceramic fiber

MODEL GDPL4F

Inner wall: 316L or 304 2B stainless steel (20 ga - 6" (152mm) to 38" (965mm))

Outer wall: 301,316L, 304 2B stainless steel, 430 or galvalume (24 ga - 6" (152mm) to 40" (1016mm) diameter; 20 ga - 42" (1067mm) to 48" (1219mm) diameter)

Insulation: 4" (51mm) high temperature ceramic fiber

SUPPORTS & ACCESSORIES

Galvanized steel, hot-galvanized steel, 316 L or 304 2B stainless steel

| COMPONENTS | Internal walls | | external walls | | materials | |
|--|----------------|-----------|----------------|-----------|-----------|------------|
| | STANDARD | AVAILABLE | STANDARD | AVAILABLE | STANDARD | AVAILABLE |
| LENGTHS, ADJUSTABLE LENGTH VARIABLE LENGTH | 2 | 1 | 2 | 1 | -- | -- |
| DUCT DRAIN/NOZZLE SECTION | 2 | 1 | 2 | 1 | -- | -- |
| TEES | 2 | 1 | 2 | 1 | -- | -- |
| WYE | 2 | 1 | 2 | 1 | -- | -- |
| ELBOWS | 2 | 1 | 2 | 1 | -- | -- |
| INCREASER/REDUCER | 2 | 1 | 2 | 1 | -- | -- |
| TEE CAPS | 2 | 1 | 2 | 1 | -- | -- |
| ASSEMBLY BAND | 2 | 1 | -- | -- | -- | -- |
| FINISHING BAND | -- | -- | 2 | 1 | -- | -- |
| TRANSITION ADAPTER | 2 | 1 | 2 | 1 | -- | -- |
| ANCHOR PLATE | 2 | 1 | 2 | 1 | 3 | 1, 2 and 3 |
| HANGER BRACKET | -- | -- | -- | -- | 3 | 1, 2 and 4 |
| WALL/HORIZONTAL SUPPORTS | 2 | 1 | 2 | 1 | 3 | 1, 2 and 4 |
| ROOF SUPPORT/GUIDING SPACER | -- | -- | -- | -- | 3 | 1, 2 and 4 |
| WALL/FLOOR GUIDES | -- | -- | -- | -- | 3 | 1, 2 and 4 |
| FIRESTOS WALL FIRESTOPS | -- | -- | -- | -- | 3 | 1 and 2 |
| RADIANT FIRESTOPS | -- | -- | -- | -- | 3 | 1 and 2 |
| INSULATED SLEEVE, INSULATED WALL FIRESTOPS | -- | -- | -- | -- | 3 | 1 and 2 |
| WALL BAND, SUSPENSION BAND | -- | -- | -- | -- | 3 | 1, 2 and 4 |
| GUY WIRE BAND | -- | -- | -- | -- | 2 | 1, 2 and 4 |
| COLLARS, FLASHING | -- | -- | -- | -- | -- | 1 and 2 |
| CLOSURE SECTION | 2 | 1 | 2 | 1 | -- | -- |
| EXHAUST CONE | 2 | 1 | 2 | 1 | -- | -- |
| FAN ADAPTER | 2 | 1 | 2 | 1 | -- | -- |

- 1: 316 L stainless steel
- 2: 304 2B stainless steel
- 3: Galvanized steel
- 4: Hot-galvanized steel

WEIGHTS AND CLEARANCES

| GDP ● GDPL ● GDPL2F ● GDPL4F | | | | LINEAR WEIGHT | | | | | | | |
|------------------------------|------|-----------------|---------------------|---------------|------|-------|------|--------|-------|--------|------|
| I.D. | | AREA | | GDP | | GDPL | | GDPL2F | | GDPL4F | |
| in | mm | in ² | 1000mm ² | lb/ft | kg/m | lb/ft | kg/m | lb/ft | kg/m | lb/ft | kg/m |
| 6 | 152 | 28 | 18.2 | 3.4 | 5.0 | 5.7 | 8.5 | 8.8 | 13.1 | 14.6 | 21.8 |
| 8 | 203 | 50 | 32.4 | 4.5 | 6.7 | 7.2 | 10.8 | 11.1 | 16.5 | 17.7 | 26.3 |
| 10 | 254 | 79 | 50.7 | 5.7 | 8.4 | 8.8 | 13.0 | 13.4 | 19.9 | 20.7 | 30.8 |
| 12 | 302 | 113 | 73.0 | 6.8 | 10.1 | 10.3 | 15.3 | 15.6 | 23.3 | 23.8 | 35.4 |
| 14 | 356 | 154 | 99.3 | 7.9 | 11.8 | 11.8 | 17.5 | 17.9 | 26.7 | 26.8 | 39.9 |
| 16 | 406 | 201 | 129.7 | 9.0 | 13.5 | 13.3 | 19.8 | 20.2 | 30.1 | 29.9 | 44.4 |
| 18 | 457 | 254 | 164.2 | 12.2 | 15.1 | 14.8 | 22.0 | 22.5 | 33.4 | 32.9 | 49.0 |
| 20 | 508 | 314 | 202.7 | 11.3 | 16.8 | 16.3 | 24.3 | 24.7 | 36.8 | 35.9 | 53.5 |
| 22 | 559 | 380 | 245.2 | 12.4 | 18.5 | 17.8 | 26.5 | 27.0 | 40.2 | 39.0 | 58.0 |
| 24 | 610 | 452 | 291.9 | 13.6 | 20.2 | 19.3 | 28.7 | 29.3 | 43.6 | 42.0 | 62.5 |
| 26 | 660 | 531 | 342.5 | 14.7 | 21.9 | 20.8 | 31.0 | 31.6 | 47.0 | 45.1 | 67.1 |
| 28 | 711 | 616 | 397.3 | 15.8 | 23.5 | 22.3 | 33.2 | 33.9 | 50.4 | 48.1 | 71.6 |
| 30 | 762 | 707 | 456.0 | 17.0 | 25.2 | 23.8 | 35.5 | 36.1 | 53.8 | 51.6 | 76.1 |
| 32 | 813 | 804 | 518.9 | 18.1 | 26.9 | 25.4 | 37.7 | 38.4 | 57.2 | 54.2 | 80.7 |
| 34 | 864 | 908 | 585.8 | 19.2 | 28.6 | 26.9 | 40.0 | 40.7 | 60.5 | 57.3 | 85.2 |
| 36 | 914 | 1018 | 656.7 | 20.3 | 30.3 | 28.4 | 42.2 | 43.0 | 64.9 | 60.3 | 89.7 |
| 38 | 965 | 1134 | 731.7 | 21.5 | 32.0 | 29.9 | 44.5 | 45.2 | 67.3 | 63.3 | 94.3 |
| 40 | 1016 | 1257 | 810.7 | 22.6 | 33.6 | 31.4 | 46.7 | 47.5 | 70.7 | | |
| 42 | 1067 | 1662 | 1072.2 | 26.0 | 38.7 | 50.4 | 75.0 | 68.9 | 102.5 | | |
| 48 | 1219 | 1810 | 1167.5 | 27.1 | 40.4 | 52.5 | 78.2 | 71.7 | 106.8 | | |

| D.I. | Minimum clearance air space to combustible construction | | | | | | | |
|------------|---|-----|------------|-----|--------------|-----|--------------|----|
| | Model GDP | | Model GDPL | | Model GDPL2F | | Model GDPL4F | |
| | in | mm | in | mm | in | mm | in | mm |
| 6" to 14" | 18" | 457 | 14" | 355 | 4" | 102 | 0" | 0 |
| 16" to 22" | 18" | 457 | 16" | 406 | 6" | 152 | 0" | 0 |
| 24" to 32" | 18" | 457 | 18" | 457 | 8" | 203 | 0" | 0 |
| 32" to 38" | 18" | 457 | 20" | 508 | 10" | 254 | 0" | 0 |
| 40" to 42" | 18" | 457 | 20" | 508 | 10" | 254 | -- | -- |
| 44" to 48" | 18" | 457 | 20" | 508 | 12" | 305 | -- | -- |

Minimum opening when installing a grease duct through a floor or wall made of combustible construction.

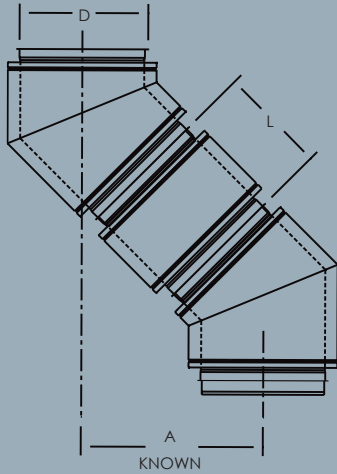
O.D. + 2 X (min. clearance air space) Ex. GDPL2F, O.D. = 12" ⇒ 12" + (2 X 4") = 20"

Minimum opening when installing a grease duct through a floor or wall made of non combustible construction.

O.D. + 1" Ex. GDPL2F, O.D. = 12" ⇒ 12" + 1" = 13"

OFFSETS

OFFSET CALCULATIONS



EFFECTIVE LENGTH CALCULATIONS

- OFFSET dimension is known
- Effective length is to be determined using equation 1, 2 or 3 depending on elbows used

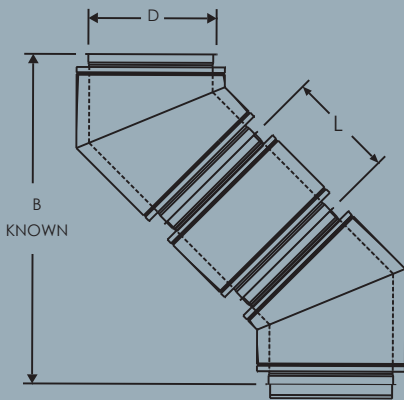
| | |
|--------------------------------------|------------|
| 1. $L(A) = 3.864(A) - 0.132D - 13''$ | 15° elbows |
| 2. $L(A) = 2(A) - 0.268D - 13''$ | 30° elbows |
| 3. $L(A) = 1.414(A) - 0.414D - 13''$ | 45° elbows |

EXAMPLE: An 8'' Grease Duct using 2 - 45° elbows and 43'' OFFSET (A) using equation 3:

$$3. \quad L(A) = 1.414(A) - 0.414D - 13''$$

$$L(A) = 1.414(44.75'') - 0.414(8'') - 13''$$

$$L(A) = 47'' \text{ in effective length choose a } 48'' \text{ length (48L)}$$



EFFECTIVE LENGTH CALCULATIONS

- HEIGHT dimension is known
- Effective length is to be determined using equation 4, 5 or 6 depending on elbows used

| | |
|--|------------|
| 4. $L(B) = 1.035(B) - 0.268D - 26.459''$ | 15° elbows |
| 5. $L(B) = 1.155(B) - 0.577D - 28.011''$ | 30° elbows |
| 6. $L(B) = 1.414(B) - D - 31.385''$ | 45° elbows |

EXAMPLE: A 10'' Grease Duct using 2- 45° elbows and 51'' HEIGHT (B) using equation 6:

$$6. \quad L(B) = 1.414(B) - D - 31.385''$$

$$L(B) = 1.414(55'') - 10'' - 31.385''$$

$$L(B) = 36.385'' \text{ in effective length choose a } 24'' \text{ length (24L) + adjustable length (AL)}$$

Refer to the elbows specific table for minimum offsets and heights of two matched elbows. For special conditions, we can manufacture one piece offset.

LENGTHS

STRAIGHT LENGTHS • 48L • 36L • 24L • 12L

Available in 22 diameters from 6 to 48" (152 to 1219mm). Standard lengths: 48" (1219mm), 36" (914mm), 24" (610mm) and 12" (305mm).

Includes:

- 1 Assembly band (AB)
- 1 Finishing band (FB)

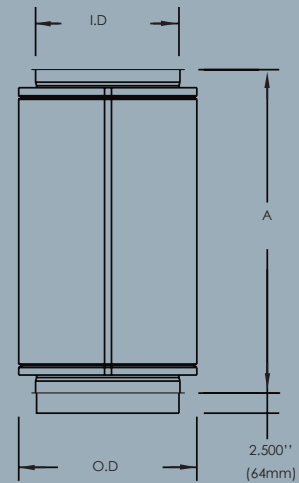
$K = 0.30 L/D$

Where L = Pipe length in feet
D = Pipe diameter in inches



| GDPL • GDPL2F | | | |
|---------------|------|------|------|
| I.D. | | O.D. | |
| in | mm | in | mm |
| 6 | 152 | 10 | 254 |
| 8 | 203 | 12 | 305 |
| 10 | 254 | 14 | 356 |
| 12 | 305 | 16 | 406 |
| 14 | 356 | 18 | 457 |
| 16 | 406 | 20 | 508 |
| 18 | 457 | 22 | 559 |
| 20 | 508 | 24 | 610 |
| 22 | 559 | 26 | 660 |
| 24 | 610 | 28 | 711 |
| 26 | 660 | 30 | 762 |
| 28 | 711 | 32 | 813 |
| 30 | 762 | 34 | 864 |
| 32 | 813 | 36 | 914 |
| 34 | 864 | 38 | 965 |
| 36 | 914 | 40 | 1016 |
| 38 | 965 | 42 | 1067 |
| 40 | 1016 | 44 | 1118 |
| 42 | 1067 | 46 | 1168 |
| 44 | 1118 | 48 | 1219 |
| 46 | 1168 | 50 | 1270 |
| 48 | 1219 | 52 | 1321 |

| GDPL4F | | | |
|--------|------|------|------|
| I.D. | | O.D. | |
| in | mm | in | mm |
| 6 | 152 | 14 | 356 |
| 8 | 203 | 16 | 406 |
| 10 | 254 | 18 | 457 |
| 12 | 305 | 20 | 508 |
| 14 | 356 | 22 | 559 |
| 16 | 406 | 24 | 610 |
| 18 | 457 | 26 | 660 |
| 20 | 508 | 28 | 711 |
| 22 | 559 | 30 | 762 |
| 24 | 610 | 32 | 813 |
| 26 | 660 | 34 | 864 |
| 28 | 711 | 36 | 914 |
| 30 | 762 | 38 | 965 |
| 32 | 813 | 40 | 1016 |
| 34 | 864 | 42 | 1067 |
| 36 | 914 | 44 | 1118 |
| 38 | 965 | 46 | 1168 |
| 40 | 1016 | 48 | 1219 |
| 42 | 1067 | 50 | 1270 |
| 44 | 1118 | 52 | 1321 |
| 46 | 1168 | 54 | 1372 |
| 48 | 1219 | 56 | 1422 |



| LENGTHS | EFFECTIVE LENGTHS "A" | |
|---------------|-----------------------|------|
| | in | mm |
| 12" (305 mm) | 11.000 | 279 |
| 24" (610 mm) | 23.000 | 584 |
| 36" (914 mm) | 35.000 | 889 |
| 48" (1219 mm) | 47.000 | 1194 |

LENGTHS

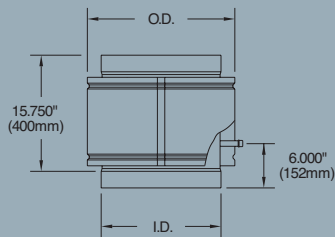
NOZZEL SECTION • NS

Used to suppress fire or to connect to a cleaning system. To be connected to a drain of 1"Ø (25mm) – NPT.

Includes:

- 1 Assembly band (AB)
- 1 Finishing band (FB)

K = Same as pipe length



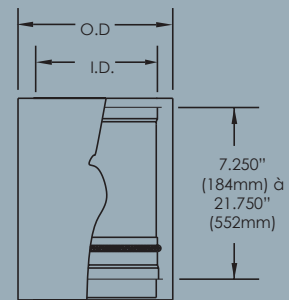
VARIABLE LENGTH • VL

Used to absorb linear expansion between two fixed points on low pressure applications.

Includes:

- 1 Assembly band (AB)
- 1 Outer wall 36" (914mm) long
- 1 Strip of insulation for GDPL2F systems

K = Same as pipe length



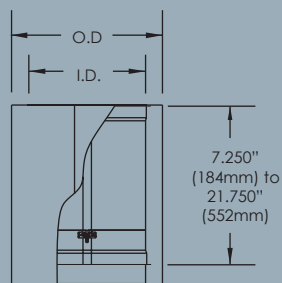
ADJUSTABLE LENGTH • AL

Used to complete on site installation precisely. It is not designed to compensate for linear expansion nor to support the vertical load of the chimney.

Includes:

- 1 Assembly band (AB)
- 1 Outer wall 36" (914mm) long
- 1 Strip of insulation for GDPL2F systems

K = Same as pipe length



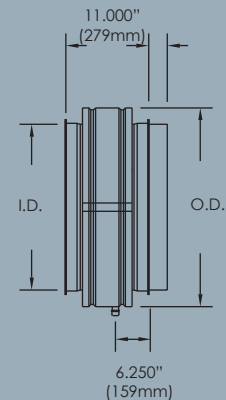
DUCT DRAIN • DD

Used to collect rainwater or condensation water from inside vertical or horizontal flue. To be connected to a drain of 3/4"Ø (19mm) - NPT.

Includes:

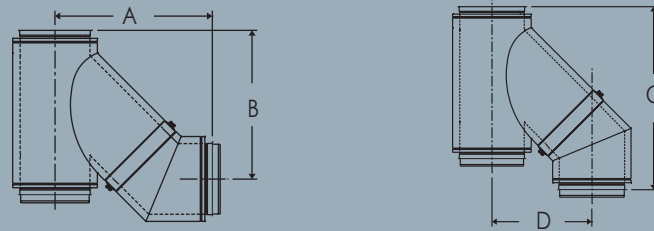
- 1 Assembly band (AB)
- 1 Finishing band (FB)

K = Same as pipe length



TEES

45° TEE and 45° ELBOW ASSEMBLY



| GDPL • GDPL2F | | | | | | | | | | | |
|---------------|------|------|------|--------|------|--------|------|--------|------|--------|------|
| I.D. | | O.D. | | A | | B | | C | | D | |
| in | mm | in | mm | in | mm | in | mm | in | mm | in | mm |
| 6 | 152 | 10 | 254 | 26.471 | 672 | 24.471 | 698 | 35.213 | 894 | 18.728 | 476 |
| 8 | 203 | 12 | 305 | 28.885 | 734 | 29.885 | 759 | 38.042 | 966 | 20.728 | 526 |
| 10 | 254 | 14 | 356 | 31.299 | 795 | 32.299 | 820 | 40.870 | 1038 | 22.728 | 577 |
| 12 | 305 | 16 | 406 | 33.713 | 856 | 34.713 | 882 | 43.698 | 1110 | 24.728 | 628 |
| 14 | 356 | 18 | 457 | 36.127 | 918 | 37.127 | 943 | 46.527 | 1182 | 26.728 | 679 |
| 16 | 406 | 20 | 508 | 38.542 | 979 | 39.542 | 1004 | 49.355 | 1254 | 28.728 | 730 |
| 18 | 457 | 22 | 559 | 40.956 | 1040 | 41.956 | 1066 | 52.184 | 1325 | 30.728 | 780 |
| 20 | 508 | 24 | 610 | 43.370 | 1102 | 44.370 | 1127 | 55.012 | 1397 | 32.728 | 831 |
| 22 | 559 | 26 | 660 | 45.784 | 1163 | 46.784 | 1188 | 57.841 | 1469 | 34.728 | 882 |
| 24 | 610 | 28 | 711 | 48.198 | 1224 | 49.198 | 1250 | 60.669 | 1541 | 36.728 | 933 |
| 26 | 660 | 30 | 762 | 50.613 | 1286 | 51.613 | 1311 | 63.497 | 1613 | 38.728 | 984 |
| 28 | 711 | 32 | 813 | 53.027 | 1347 | 54.027 | 1372 | 66.326 | 1685 | 40.728 | 1034 |
| 30 | 762 | 34 | 864 | 55.441 | 1408 | 56.441 | 1434 | 69.154 | 1757 | 42.728 | 1085 |
| 32 | 813 | 36 | 914 | 57.855 | 1470 | 58.855 | 1495 | 71.983 | 1828 | 44.728 | 1136 |
| 34 | 864 | 38 | 965 | 60.270 | 1531 | 61.270 | 1556 | 74.811 | 1900 | 46.728 | 1187 |
| 36 | 914 | 40 | 1016 | 62.684 | 1592 | 63.684 | 1618 | 77.640 | 1972 | 48.728 | 1238 |
| 38 | 965 | 42 | 1067 | 65.098 | 1653 | 66.098 | 1679 | 80.468 | 2044 | 50.728 | 1288 |
| 40 | 1016 | 44 | 1118 | 67.512 | 1715 | 68.512 | 1740 | 83.296 | 2116 | 52.728 | 1339 |
| 42 | 1067 | 46 | 1168 | 69.926 | 1776 | 70.926 | 1802 | 86.125 | 2188 | 54.728 | 1390 |
| 44 | 1118 | 48 | 1219 | 72.341 | 1837 | 73.341 | 1863 | 88.953 | 2259 | 56.728 | 1441 |
| 46 | 1168 | 50 | 1270 | 74.755 | 1899 | 75.755 | 1924 | 91.782 | 2331 | 58.728 | 1492 |
| 48 | 1219 | 52 | 1321 | 77.169 | 1960 | 78.169 | 1985 | 94.610 | 2403 | 60.728 | 1542 |

| GDPL4F | | | | | | | | | | | |
|--------|------|------|------|--------|------|--------|------|--------|------|--------|------|
| I.D. | | O.D. | | A | | B | | C | | D | |
| in | mm | in | mm | in | mm | in | mm | in | mm | in | mm |
| 6 | 152 | 14 | 356 | 31.006 | 787 | 31.006 | 787 | 39.749 | 1009 | 22.263 | 565 |
| 8 | 203 | 16 | 406 | 33.420 | 848 | 33.420 | 848 | 42.577 | 1081 | 24.263 | 616 |
| 10 | 254 | 18 | 457 | 35.835 | 910 | 35.835 | 910 | 45.406 | 1153 | 26.263 | 667 |
| 12 | 304 | 20 | 508 | 38.249 | 971 | 38.249 | 971 | 48.234 | 1225 | 28.263 | 717 |
| 14 | 355 | 24 | 558 | 40.663 | 1032 | 40.663 | 1032 | 51.062 | 1297 | 30.263 | 768 |
| 16 | 406 | 22 | 610 | 43.077 | 1094 | 43.077 | 1094 | 53.891 | 1368 | 32.263 | 819 |
| 18 | 457 | 26 | 660 | 45.491 | 1155 | 45.491 | 1155 | 56.719 | 1440 | 34.263 | 870 |
| 20 | 508 | 28 | 711 | 47.906 | 1216 | 47.906 | 1216 | 59.548 | 1512 | 36.263 | 921 |
| 22 | 610 | 30 | 762 | 50.320 | 1278 | 50.320 | 1278 | 62.376 | 1584 | 38.263 | 972 |
| 24 | 609 | 32 | 812 | 52.734 | 1339 | 52.734 | 1339 | 65.205 | 1656 | 40.263 | 1022 |
| 26 | 660 | 34 | 863 | 55.148 | 1400 | 55.148 | 1400 | 68.033 | 1728 | 42.263 | 1073 |
| 28 | 711 | 36 | 914 | 57.562 | 1462 | 57.562 | 1462 | 70.861 | 1799 | 44.263 | 1124 |
| 30 | 762 | 38 | 965 | 59.977 | 1523 | 59.977 | 1523 | 73.690 | 1871 | 46.263 | 1175 |
| 32 | 812 | 40 | 1016 | 62.391 | 1584 | 62.391 | 1584 | 76.518 | 1943 | 48.263 | 1225 |
| 34 | 863 | 42 | 1066 | 64.805 | 1646 | 64.805 | 1646 | 79.347 | 2015 | 50.263 | 1276 |
| 36 | 914 | 44 | 1117 | 67.219 | 1707 | 67.219 | 1707 | 82.175 | 2087 | 52.263 | 1327 |
| 38 | 965 | 46 | 1168 | 69.634 | 1768 | 69.634 | 1768 | 85.004 | 2159 | 54.263 | 1378 |
| 40 | 1016 | 48 | 1219 | 72.048 | 1830 | 72.048 | 1830 | 87.832 | 2230 | 56.263 | 1429 |
| 42 | 1066 | 50 | 1270 | 74.462 | 1891 | 74.462 | 1891 | 90.660 | 2302 | 58.263 | 1479 |
| 44 | 1117 | 52 | 1320 | 76.876 | 1952 | 76.876 | 1952 | 93.489 | 2374 | 60.263 | 1530 |
| 46 | 1168 | 54 | 1371 | 79.290 | 2014 | 79.290 | 2014 | 96.317 | 2446 | 62.263 | 1581 |
| 48 | 1219 | 56 | 1422 | 81.705 | 2075 | 81.705 | 2075 | 99.146 | 2518 | 64.263 | 1632 |

TEES

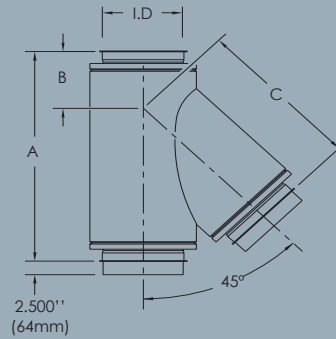
45° TEE • T45

For connection of vertical and horizontal lengths at a 45° angle. It provides low resistance to facilitate gas discharge. A tee cap (TC) or drain-tee cap (DC) may be used to block one of the cleaning or drainage openings.

Includes:

- 1 Assembly band (AB)
- 1 Finishing band (FB)

K = 0.4



| GDPL • GDPL2F | | | | | | | |
|---------------|------|--------|------|--------|-----|--------|------|
| I.D. | | A | | B | | C | |
| in | mm | in | mm | in | mm | in | mm |
| 6 | 152 | 27.485 | 698 | 8.743 | 222 | 18.743 | 476 |
| 8 | 203 | 30.314 | 770 | 9.157 | 233 | 21.157 | 537 |
| 10 | 254 | 33.142 | 842 | 9.571 | 243 | 23.571 | 599 |
| 12 | 305 | 35.971 | 914 | 9.985 | 254 | 25.985 | 660 |
| 14 | 356 | 38.799 | 985 | 10.399 | 264 | 28.399 | 721 |
| 16 | 406 | 41.627 | 1057 | 10.814 | 275 | 30.814 | 783 |
| 18 | 457 | 44.456 | 1129 | 11.228 | 285 | 33.228 | 844 |
| 20 | 508 | 47.284 | 1201 | 11.642 | 296 | 35.642 | 905 |
| 22 | 559 | 50.113 | 1273 | 12.056 | 306 | 38.056 | 967 |
| 24 | 610 | 52.941 | 1345 | 12.471 | 317 | 40.471 | 1028 |
| 26 | 660 | 55.770 | 1417 | 12.885 | 327 | 42.885 | 1089 |
| 28 | 711 | 58.598 | 1488 | 13.299 | 338 | 45.299 | 1151 |
| 30 | 762 | 61.426 | 1560 | 13.713 | 348 | 47.713 | 1212 |
| 32 | 813 | 64.255 | 1632 | 14.127 | 359 | 50.127 | 1273 |
| 34 | 864 | 67.083 | 1704 | 14.542 | 369 | 52.542 | 1335 |
| 36 | 914 | 69.912 | 1776 | 14.956 | 380 | 54.956 | 1396 |
| 38 | 965 | 72.740 | 1848 | 15.370 | 390 | 57.370 | 1457 |
| 40 | 1016 | 75.569 | 1919 | 15.784 | 401 | 59.784 | 1519 |
| 42 | 1067 | 78.397 | 1991 | 16.198 | 411 | 62.198 | 1580 |
| 44 | 1118 | 81.225 | 2063 | 16.613 | 422 | 64.613 | 1641 |
| 46 | 1168 | 84.054 | 2135 | 17.027 | 432 | 67.027 | 1702 |
| 48 | 1219 | 86.882 | 2207 | 17.441 | 443 | 69.441 | 1764 |

| GDPL4F | | | | | | | |
|--------|------|--------|------|--------|-----|--------|------|
| I.D. | | A | | B | | C | |
| in | mm | in | mm | in | mm | in | mm |
| 6 | 152 | 31.485 | 799 | 8.743 | 222 | 22.743 | 577 |
| 8 | 203 | 34.314 | 871 | 9.157 | 232 | 25.157 | 639 |
| 10 | 254 | 37.142 | 943 | 9.571 | 243 | 27.571 | 700 |
| 12 | 305 | 39.791 | 1015 | 9.985 | 253 | 29.985 | 761 |
| 14 | 356 | 42.799 | 1087 | 10.399 | 264 | 32.399 | 822 |
| 16 | 406 | 45.627 | 1158 | 10.814 | 274 | 34.814 | 884 |
| 18 | 457 | 48.456 | 1280 | 11.228 | 285 | 37.228 | 945 |
| 20 | 508 | 51.284 | 1302 | 11.642 | 295 | 39.642 | 1006 |
| 22 | 559 | 54.113 | 1374 | 12.056 | 306 | 42.056 | 1068 |
| 24 | 610 | 56.941 | 1446 | 12.471 | 316 | 44.471 | 1129 |
| 26 | 660 | 59.770 | 1518 | 12.885 | 327 | 46.885 | 1190 |
| 28 | 711 | 62.598 | 1590 | 13.299 | 337 | 49.299 | 1252 |
| 30 | 762 | 65.426 | 1661 | 13.713 | 348 | 51.713 | 1313 |
| 32 | 813 | 68.255 | 1733 | 14.127 | 358 | 54.127 | 1374 |
| 34 | 864 | 71.083 | 1805 | 14.542 | 369 | 56.542 | 1436 |
| 36 | 914 | 73.912 | 1877 | 14.956 | 379 | 58.956 | 1497 |
| 38 | 965 | 76.740 | 1949 | 15.370 | 390 | 61.370 | 1558 |
| 40 | 1016 | 79.569 | 2021 | 15.784 | 400 | 63.784 | 1620 |
| 42 | 1067 | 82.397 | 2092 | 16.198 | 411 | 66.198 | 1681 |
| 44 | 1118 | 85.225 | 2164 | 16.613 | 422 | 68.613 | 1742 |
| 46 | 1168 | 88.054 | 2236 | 17.027 | 432 | 71.027 | 1804 |
| 48 | 1219 | 90.882 | 2308 | 17.441 | 433 | 73.441 | 1865 |

TEES

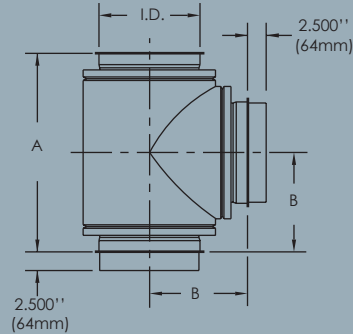
90° TEE • T90 and GREASE DUCT TEE (GT90)

For connection of vertical and horizontal lengths. May be used for the installation of a draft regulator at the point of connection between the flue and the appliance. A tee cap (TC) or drain-tee cap (DC) may be used to block one of the cleaning or drainage openings.

Includes:

- 1 Assembly band (AB)
- 1 Finishing band (FB)

K = 1.25



| GDPL • GDPL2F | | | | | |
|---------------|------|----|------|------|-----|
| I.D. | | A | | B | |
| in | mm | in | mm | in | mm |
| 6 | 152 | 19 | 438 | 9.5 | 241 |
| 8 | 203 | 21 | 533 | 10.5 | 267 |
| 10 | 254 | 23 | 584 | 11.5 | 292 |
| 12 | 305 | 25 | 635 | 12.5 | 318 |
| 14 | 356 | 27 | 686 | 13.5 | 343 |
| 16 | 406 | 29 | 737 | 14.5 | 368 |
| 18 | 457 | 31 | 787 | 15.5 | 394 |
| 20 | 508 | 33 | 838 | 16.5 | 419 |
| 22 | 559 | 35 | 889 | 17.5 | 445 |
| 24 | 610 | 37 | 940 | 18.5 | 470 |
| 26 | 660 | 39 | 991 | 19.5 | 495 |
| 28 | 711 | 41 | 1041 | 20.5 | 521 |
| 30 | 762 | 43 | 1092 | 21.5 | 546 |
| 32 | 813 | 45 | 1143 | 22.5 | 572 |
| 34 | 864 | 47 | 1194 | 23.5 | 597 |
| 36 | 914 | 49 | 1245 | 24.5 | 622 |
| 38 | 965 | 51 | 1295 | 25.5 | 648 |
| 40 | 1016 | 53 | 1346 | 26.5 | 673 |
| 42 | 1067 | 55 | 1397 | 27.5 | 699 |
| 44 | 1118 | 57 | 1448 | 28.5 | 724 |
| 46 | 1168 | 59 | 1499 | 29.5 | 749 |
| 48 | 1219 | 61 | 1549 | 30.5 | 775 |

| GDPL4F | | | | | |
|--------|------|--------|------|--------|-----|
| I.D. | | A | | B | |
| in | mm | in | mm | in | mm |
| 6 | 152 | 23.000 | 584 | 11.500 | 292 |
| 8 | 203 | 25.000 | 635 | 12.500 | 318 |
| 10 | 254 | 27.000 | 686 | 13.500 | 343 |
| 12 | 305 | 29.000 | 737 | 14.500 | 368 |
| 14 | 356 | 31.000 | 787 | 15.500 | 394 |
| 16 | 406 | 33.000 | 838 | 16.500 | 419 |
| 18 | 457 | 35.000 | 889 | 17.500 | 445 |
| 20 | 508 | 37.000 | 940 | 18.500 | 470 |
| 22 | 559 | 39.000 | 991 | 19.500 | 495 |
| 24 | 610 | 41.000 | 1041 | 20.500 | 521 |
| 26 | 660 | 43.000 | 1092 | 21.500 | 546 |
| 28 | 711 | 45.000 | 1143 | 22.500 | 572 |
| 30 | 762 | 47.000 | 1194 | 23.500 | 597 |
| 32 | 813 | 49.000 | 1245 | 24.500 | 622 |
| 34 | 864 | 51.000 | 1295 | 25.500 | 648 |
| 36 | 914 | 53.000 | 1346 | 26.500 | 673 |
| 38 | 965 | 55.000 | 1397 | 27.500 | 699 |
| 40 | 1016 | 57.000 | 1448 | 28.500 | 724 |
| 42 | 1067 | 59.000 | 1499 | 29.500 | 749 |
| 44 | 1118 | 61.000 | 1549 | 30.500 | 775 |
| 46 | 1168 | 63.000 | 1600 | 31.500 | 800 |
| 48 | 1219 | 65.000 | 1651 | 32.500 | 826 |

TEES

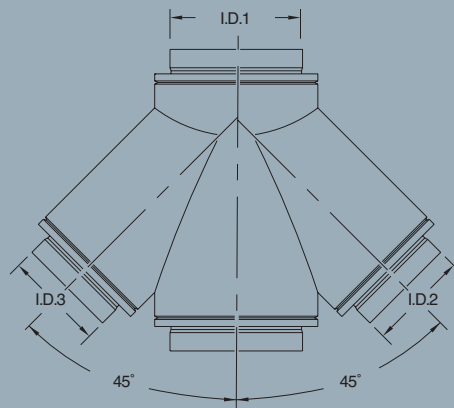
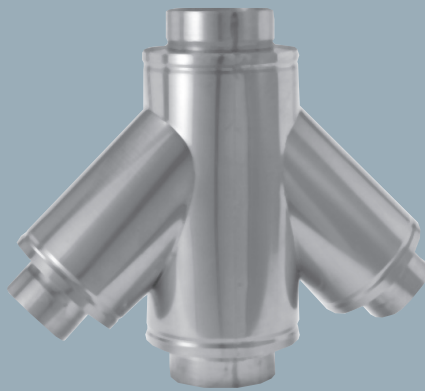
DOUBLE 45° TEE (DT45)

Used to connect two systems together with a minimum resistance to flow. A tee cap (TC) or drain-tee cap (DC) may be used to block one of the bases of the piece, for cleaning or drainage. Specify the diameters of inlets and outlets of the fitting.

Includes:

- 1 Assembly band (AB)
- 1 Finishing band (FB)

$K = 0.4$



TEES

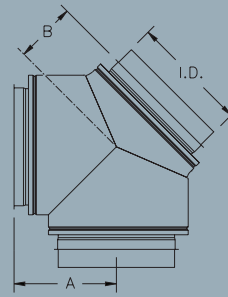
90° WYE (W90)

Used to offset the grease duct or conduit by 90°. Facilitates access for inspection and maintenance of the grease duct or conduit. A tee cap (TC) may be used to block one of the cleaning openings.

Includes:

- 2 Assembly bands (AB)
- 2 Finishing bands (FB)

K = 0.6



| GDPL • GDPL2F | | | | | | | |
|---------------|------|--------|------|--------|-----|--------|------|
| I.D. | | A | | B | | C | |
| in | mm | in | mm | in | mm | in | mm |
| 6 | 152 | 26.235 | 666 | 6.993 | 178 | 19.243 | 489 |
| 8 | 203 | 19.064 | 738 | 7.407 | 188 | 21.657 | 550 |
| 10 | 254 | 31.892 | 810 | 7.821 | 199 | 24.071 | 611 |
| 12 | 305 | 34.721 | 882 | 8.235 | 209 | 26.485 | 673 |
| 14 | 356 | 37.549 | 954 | 8.649 | 220 | 28.889 | 734 |
| 16 | 406 | 40.377 | 1026 | 9.024 | 230 | 31.314 | 795 |
| 18 | 457 | 43.206 | 1097 | 9.478 | 241 | 33.728 | 857 |
| 20 | 508 | 46.034 | 1169 | 9.892 | 251 | 36.142 | 918 |
| 22 | 559 | 48.863 | 1241 | 10.306 | 262 | 38.556 | 979 |
| 24 | 610 | 51.691 | 1313 | 10.721 | 272 | 40.971 | 1041 |
| 26 | 660 | 54.520 | 1385 | 11.135 | 283 | 43.385 | 1102 |
| 28 | 711 | 57.348 | 1457 | 11.549 | 293 | 45.799 | 1163 |
| 30 | 762 | 60.176 | 1528 | 11.963 | 304 | 48.213 | 1225 |
| 32 | 813 | 63.005 | 1600 | 12.377 | 314 | 50.627 | 1286 |
| 34 | 864 | 65.833 | 1672 | 12.792 | 325 | 53.042 | 1347 |
| 36 | 914 | 68.662 | 1744 | 13.206 | 335 | 55.456 | 1409 |
| 38 | 965 | 71.490 | 1816 | 13.260 | 346 | 57.870 | 1470 |
| 40 | 1016 | 74.319 | 1888 | 14.034 | 356 | 60.284 | 1531 |
| 42 | 1067 | 77.147 | 1960 | 14.448 | 367 | 62.628 | 1593 |
| 44 | 1118 | 79.975 | 2031 | 14.863 | 378 | 65.113 | 1654 |
| 46 | 1168 | 82.804 | 2103 | 15.277 | 388 | 67.527 | 1715 |
| 48 | 1219 | 85.632 | 2175 | 15.691 | 399 | 69.941 | 1777 |

| GDPL4F | | | | | | | |
|--------|------|--------|------|--------|-----|--------|------|
| I.D. | | A | | B | | C | |
| in | mm | in | mm | in | mm | in | mm |
| 6 | 152 | 27.485 | 698 | 8.743 | 222 | 18.743 | 476 |
| 8 | 203 | 30.314 | 770 | 9.157 | 233 | 21.157 | 537 |
| 10 | 254 | 33.142 | 842 | 9.571 | 243 | 23.571 | 599 |
| 12 | 305 | 35.971 | 914 | 9.985 | 254 | 25.985 | 660 |
| 14 | 356 | 38.799 | 985 | 10.399 | 264 | 28.399 | 721 |
| 16 | 406 | 41.627 | 1057 | 10.814 | 275 | 30.814 | 783 |
| 18 | 457 | 44.456 | 1129 | 11.228 | 285 | 33.228 | 844 |
| 20 | 508 | 47.284 | 1201 | 11.642 | 296 | 35.642 | 905 |
| 22 | 559 | 50.113 | 1273 | 12.056 | 306 | 38.056 | 967 |
| 24 | 610 | 52.941 | 1345 | 12.471 | 317 | 40.471 | 1028 |
| 26 | 660 | 55.770 | 1417 | 12.885 | 327 | 42.885 | 1089 |
| 28 | 711 | 58.598 | 1488 | 13.299 | 338 | 45.299 | 1151 |
| 30 | 762 | 61.426 | 1560 | 13.713 | 348 | 47.713 | 1212 |
| 32 | 813 | 64.255 | 1632 | 14.127 | 359 | 50.127 | 1273 |
| 34 | 864 | 67.083 | 1704 | 14.542 | 369 | 52.542 | 1335 |
| 36 | 914 | 69.912 | 1776 | 14.956 | 380 | 54.956 | 1396 |
| 38 | 965 | 72.740 | 1848 | 15.370 | 390 | 57.370 | 1457 |
| 40 | 1016 | 75.569 | 1919 | 15.784 | 401 | 59.784 | 1519 |
| 42 | 1067 | 78.397 | 1991 | 16.198 | 411 | 62.198 | 1580 |
| 44 | 1118 | 81.225 | 2063 | 16.613 | 422 | 64.613 | 1641 |
| 46 | 1168 | 84.054 | 2135 | 17.027 | 432 | 67.027 | 1702 |
| 48 | 1219 | 86.882 | 2207 | 17.441 | 443 | 69.441 | 1764 |

ELBOWS

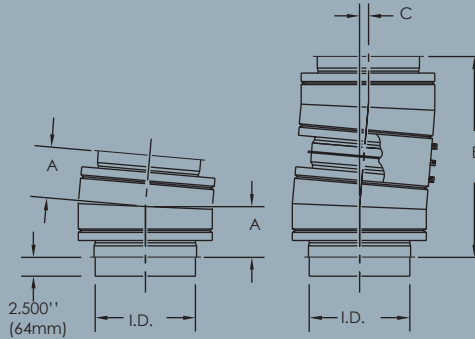
5° ELBOW • E5

Used to offset the flue or chimney by 5°. May be used to slope a flue to facilitate condensation water run-off.

Includes:

- 1 Assembly band (AB)
- 1 Finishing band (FB)

K = 0.04



| GDPL • GDPL2F | | | | | | | |
|---------------|------|-------|-----|--------|-----|-------|----|
| I.D. | | A | | B | | C | |
| in | mm | in | mm | in | mm | in | mm |
| 6 | 152 | 6.631 | 168 | 26.473 | 672 | 1.156 | 29 |
| 8 | 203 | 6.675 | 170 | 26.648 | 677 | 1.163 | 30 |
| 10 | 254 | 6.718 | 171 | 26.822 | 681 | 1.171 | 30 |
| 12 | 305 | 6.762 | 172 | 26.996 | 686 | 1.179 | 30 |
| 14 | 356 | 6.806 | 173 | 27.171 | 690 | 1.186 | 30 |
| 16 | 406 | 6.849 | 174 | 27.345 | 695 | 1.194 | 30 |
| 18 | 457 | 6.893 | 175 | 27.519 | 699 | 1.202 | 31 |
| 20 | 508 | 6.937 | 176 | 27.694 | 703 | 1.209 | 31 |
| 22 | 559 | 6.980 | 177 | 27.868 | 708 | 1.217 | 31 |
| 24 | 610 | 7.024 | 178 | 28.042 | 712 | 1.224 | 31 |
| 26 | 660 | 7.068 | 180 | 28.217 | 717 | 1.232 | 31 |
| 28 | 711 | 7.111 | 181 | 28.391 | 721 | 1.240 | 31 |
| 30 | 762 | 7.155 | 182 | 28.565 | 726 | 1.247 | 32 |
| 32 | 813 | 7.199 | 183 | 28.740 | 730 | 1.255 | 32 |
| 34 | 864 | 7.242 | 184 | 28.914 | 734 | 1.262 | 32 |
| 36 | 914 | 7.286 | 185 | 29.088 | 739 | 1.270 | 32 |
| 38 | 965 | 7.330 | 186 | 29.262 | 743 | 1.278 | 32 |
| 40 | 1016 | 7.373 | 187 | 29.437 | 748 | 1.285 | 33 |
| 42 | 1067 | 7.417 | 188 | 29.611 | 752 | 1.293 | 33 |
| 44 | 1118 | 7.461 | 189 | 29.785 | 757 | 1.300 | 33 |
| 46 | 1168 | 7.504 | 191 | 29.960 | 761 | 1.308 | 33 |
| 48 | 1219 | 7.548 | 192 | 30.134 | 765 | 1.316 | 33 |

| GDPL4F | | | | | | | |
|--------|------|-------|-----|--------|-----|-------|----|
| I.D. | | A | | B | | C | |
| in | mm | in | mm | in | mm | in | mm |
| 6 | 152 | 7.631 | 194 | 30.466 | 774 | 1.330 | 34 |
| 8 | 203 | 7.675 | 195 | 30.640 | 778 | 1.338 | 34 |
| 10 | 254 | 7.718 | 196 | 30.814 | 783 | 1.345 | 34 |
| 12 | 305 | 7.762 | 197 | 30.989 | 787 | 1.353 | 34 |
| 14 | 356 | 7.806 | 198 | 31.163 | 792 | 1.361 | 35 |
| 16 | 406 | 7.849 | 199 | 31.337 | 796 | 1.368 | 35 |
| 18 | 457 | 7.893 | 200 | 31.512 | 800 | 1.376 | 35 |
| 20 | 508 | 7.937 | 202 | 31.686 | 805 | 1.383 | 35 |
| 22 | 559 | 7.980 | 203 | 31.860 | 809 | 1.391 | 35 |
| 24 | 610 | 8.024 | 204 | 32.035 | 814 | 1.399 | 36 |
| 26 | 660 | 8.068 | 205 | 32.209 | 818 | 1.406 | 36 |
| 28 | 711 | 8.111 | 206 | 32.383 | 823 | 1.414 | 36 |
| 30 | 762 | 8.155 | 207 | 32.558 | 827 | 1.421 | 36 |
| 32 | 813 | 8.199 | 208 | 32.732 | 831 | 1.429 | 36 |
| 34 | 864 | 8.242 | 209 | 32.906 | 836 | 1.437 | 36 |
| 36 | 914 | 8.286 | 210 | 33.081 | 840 | 1.444 | 37 |
| 38 | 965 | 8.330 | 212 | 33.255 | 845 | 1.452 | 37 |
| 40 | 1016 | 8.373 | 213 | 33.429 | 849 | 1.460 | 37 |
| 42 | 1067 | 8.417 | 214 | 33.603 | 854 | 1.467 | 37 |
| 44 | 1118 | 8.461 | 215 | 33.778 | 858 | 1.475 | 37 |
| 46 | 1168 | 8.504 | 216 | 33.952 | 862 | 1.482 | 38 |
| 48 | 1219 | 8.548 | 217 | 34.126 | 867 | 1.490 | 38 |

ELBOWS

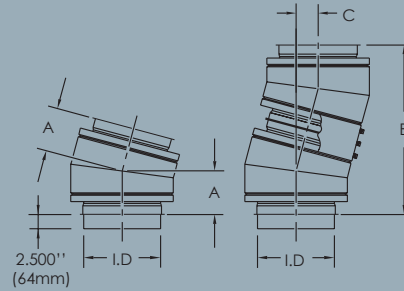
15° ELBOW • E15

Used to offset the flue or chimney by 15°.

Includes:

- 1 Assembly band (AB)
- 1 Finishing band (FB)

K = 0.06



GDPL • GDPL2F

| I.D. | | A | | B | | C | |
|------|------|-------|-----|--------|-----|-------|-----|
| in | mm | in | mm | in | mm | in | mm |
| 6 | 152 | 6.895 | 175 | 27.110 | 689 | 3.569 | 91 |
| 8 | 203 | 7.027 | 178 | 27.628 | 702 | 3.637 | 92 |
| 10 | 254 | 7.158 | 182 | 28.145 | 715 | 3.705 | 94 |
| 12 | 305 | 7.290 | 185 | 28.663 | 728 | 3.774 | 96 |
| 14 | 356 | 7.422 | 189 | 29.181 | 741 | 3.842 | 98 |
| 16 | 406 | 7.553 | 192 | 29.698 | 754 | 3.910 | 99 |
| 18 | 457 | 7.685 | 195 | 30.216 | 767 | 3.978 | 101 |
| 20 | 508 | 7.817 | 199 | 30.733 | 781 | 4.046 | 103 |
| 22 | 559 | 7.948 | 202 | 31.251 | 794 | 4.114 | 105 |
| 24 | 610 | 8.080 | 205 | 31.769 | 807 | 4.182 | 106 |
| 26 | 660 | 8.211 | 209 | 32.287 | 820 | 4.251 | 108 |
| 28 | 711 | 8.343 | 212 | 32.805 | 833 | 4.319 | 110 |
| 30 | 762 | 8.475 | 215 | 33.322 | 846 | 4.387 | 111 |
| 32 | 813 | 8.606 | 219 | 33.839 | 860 | 4.455 | 113 |
| 34 | 864 | 8.738 | 222 | 34.357 | 873 | 4.523 | 115 |
| 36 | 914 | 8.870 | 225 | 34.875 | 886 | 4.591 | 117 |
| 38 | 965 | 9.001 | 229 | 35.392 | 899 | 4.659 | 118 |
| 40 | 1016 | 9.133 | 232 | 35.910 | 912 | 4.728 | 120 |
| 42 | 1067 | 9.265 | 235 | 36.427 | 925 | 4.796 | 122 |
| 44 | 1118 | 9.396 | 239 | 36.945 | 938 | 4.864 | 124 |
| 46 | 1168 | 9.528 | 242 | 37.463 | 952 | 4.932 | 125 |
| 48 | 1219 | 9.660 | 245 | 37.980 | 965 | 5.000 | 127 |

GDPL4F

| I.D. | | A | | B | | C | |
|------|------|--------|-----|--------|------|-------|-----|
| in | mm | in | mm | in | mm | in | mm |
| 6 | 152 | 7.895 | 201 | 31.042 | 788 | 4.087 | 104 |
| 8 | 203 | 8.027 | 204 | 31.559 | 802 | 4.155 | 106 |
| 10 | 254 | 8.158 | 207 | 32.077 | 815 | 4.223 | 107 |
| 12 | 305 | 8.290 | 211 | 32.595 | 828 | 4.291 | 109 |
| 14 | 356 | 8.422 | 214 | 33.112 | 841 | 4.359 | 111 |
| 16 | 406 | 8.553 | 217 | 33.630 | 854 | 4.427 | 112 |
| 18 | 457 | 8.685 | 221 | 34.148 | 867 | 4.496 | 114 |
| 20 | 508 | 8.817 | 224 | 34.665 | 880 | 4.564 | 116 |
| 22 | 559 | 8.948 | 227 | 35.183 | 894 | 4.632 | 118 |
| 24 | 610 | 9.080 | 231 | 35.701 | 907 | 4.700 | 119 |
| 26 | 660 | 9.211 | 234 | 36.218 | 920 | 4.769 | 121 |
| 28 | 711 | 9.343 | 237 | 36.736 | 933 | 4.836 | 123 |
| 30 | 762 | 9.475 | 241 | 37.253 | 946 | 4.905 | 125 |
| 32 | 813 | 9.606 | 244 | 37.771 | 959 | 4.973 | 126 |
| 34 | 864 | 9.738 | 247 | 38.289 | 973 | 5.041 | 128 |
| 36 | 914 | 9.870 | 251 | 38.806 | 986 | 5.109 | 130 |
| 38 | 965 | 10.001 | 254 | 39.324 | 999 | 5.177 | 131 |
| 40 | 1016 | 10.133 | 257 | 39.842 | 1012 | 5.245 | 133 |
| 42 | 1067 | 10.265 | 261 | 40.359 | 1025 | 5.313 | 135 |
| 44 | 1118 | 10.396 | 264 | 40.877 | 1038 | 5.382 | 137 |
| 46 | 1168 | 10.528 | 267 | 41.395 | 1051 | 5.450 | 138 |
| 48 | 1219 | 10.660 | 271 | 41.912 | 1065 | 5.518 | 140 |

ELBOWS

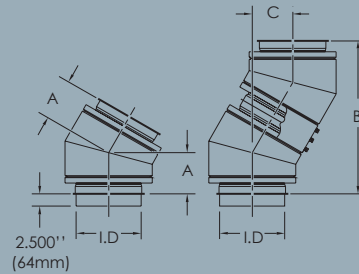
30° ELBOW • E30

Used to offset the flue or chimney by 30°.

Includes:

- 1 Assembly band (AB)
- 1 Finishing band (FB)

K = 0.12



| GDPL • GDPL2F | | | | | | | |
|---------------|------|--------|-----|--------|------|--------|-----|
| I.D. | | A | | B | | C | |
| in | mm | in | mm | in | mm | in | mm |
| 6 | 152 | 7.304 | 186 | 27.258 | 692 | 7.304 | 186 |
| 8 | 203 | 7.572 | 192 | 28.258 | 718 | 7.527 | 192 |
| 10 | 254 | 7.894 | 199 | 29.258 | 743 | 7.840 | 199 |
| 12 | 305 | 8.108 | 206 | 30.258 | 769 | 8.108 | 206 |
| 14 | 356 | 8.376 | 213 | 31.258 | 794 | 8.376 | 213 |
| 16 | 406 | 8.644 | 220 | 32.258 | 819 | 8.644 | 220 |
| 18 | 457 | 8.912 | 226 | 33.258 | 845 | 8.912 | 226 |
| 20 | 508 | 9.179 | 233 | 34.258 | 870 | 9.179 | 226 |
| 22 | 559 | 9.447 | 240 | 35.258 | 896 | 9.447 | 240 |
| 24 | 610 | 9.715 | 247 | 36.258 | 921 | 9.715 | 247 |
| 26 | 660 | 9.983 | 254 | 37.258 | 946 | 9.983 | 254 |
| 28 | 711 | 10.251 | 260 | 38.258 | 972 | 10.251 | 260 |
| 30 | 762 | 10.519 | 267 | 39.258 | 997 | 10.519 | 267 |
| 32 | 813 | 10.787 | 274 | 40.258 | 1023 | 10.787 | 274 |
| 34 | 864 | 11.055 | 281 | 41.258 | 1048 | 11.055 | 281 |
| 36 | 914 | 11.323 | 288 | 42.258 | 1073 | 11.323 | 288 |
| 38 | 965 | 11.591 | 294 | 43.258 | 1099 | 11.591 | 294 |
| 40 | 1016 | 11.859 | 301 | 44.258 | 1124 | 11.859 | 301 |
| 42 | 1067 | 12.127 | 308 | 45.258 | 1150 | 12.127 | 308 |
| 44 | 1118 | 12.395 | 315 | 46.258 | 1175 | 12.395 | 315 |
| 46 | 1168 | 12.663 | 322 | 47.258 | 1200 | 12.663 | 322 |
| 48 | 1219 | 12.931 | 328 | 48.258 | 1226 | 12.931 | 328 |

| GDPL4F | | | | | | | |
|--------|------|--------|------|--------|-----|--------|------|
| I.D. | | A | | B | | C | |
| in | mm | in | mm | in | mm | in | mm |
| 6 | 152 | 27.485 | 698 | 8.743 | 222 | 18.743 | 476 |
| 8 | 203 | 30.314 | 770 | 9.157 | 233 | 21.157 | 537 |
| 10 | 254 | 33.142 | 842 | 9.571 | 243 | 23.571 | 599 |
| 12 | 305 | 35.971 | 914 | 9.985 | 254 | 25.985 | 660 |
| 14 | 356 | 38.799 | 985 | 10.399 | 264 | 28.399 | 721 |
| 16 | 406 | 41.627 | 1057 | 10.814 | 275 | 30.814 | 783 |
| 18 | 457 | 44.456 | 1129 | 11.228 | 285 | 33.228 | 844 |
| 20 | 508 | 47.284 | 1201 | 11.642 | 296 | 35.642 | 905 |
| 22 | 559 | 50.113 | 1273 | 12.056 | 306 | 38.056 | 967 |
| 24 | 610 | 52.941 | 1345 | 12.471 | 317 | 40.471 | 1028 |
| 26 | 660 | 55.770 | 1417 | 12.885 | 327 | 42.885 | 1089 |
| 28 | 711 | 58.598 | 1488 | 13.299 | 338 | 45.299 | 1151 |
| 30 | 762 | 61.426 | 1560 | 13.713 | 348 | 47.713 | 1212 |
| 32 | 813 | 64.255 | 1632 | 14.127 | 359 | 50.127 | 1273 |
| 34 | 864 | 67.083 | 1704 | 14.542 | 369 | 52.542 | 1335 |
| 36 | 914 | 69.912 | 1776 | 14.956 | 380 | 54.956 | 1396 |
| 38 | 965 | 72.740 | 1848 | 15.370 | 390 | 57.370 | 1457 |
| 40 | 1016 | 75.569 | 1919 | 15.784 | 401 | 59.784 | 1519 |
| 42 | 1067 | 78.397 | 1991 | 16.198 | 411 | 62.198 | 1580 |
| 44 | 1118 | 81.225 | 2063 | 16.613 | 422 | 64.613 | 1641 |
| 46 | 1168 | 84.054 | 2135 | 17.027 | 432 | 67.027 | 1702 |
| 48 | 1219 | 86.882 | 2207 | 17.441 | 443 | 69.441 | 1764 |

ELBOWS

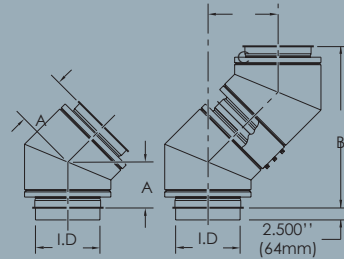
45° ELBOW • E45

Used to offset the flue or chimney by 45°.

Includes:

- 1 Assembly band (AB)
- 1 Finishing band (FB)

K = 0.15



| GDPL • GDPL2F | | | | | | | |
|---------------|------|--------|------|--------|-----|--------|------|
| I.D. | | A | | B | | C | |
| in | mm | in | mm | in | mm | in | mm |
| 6 | 152 | 26.235 | 666 | 6.993 | 178 | 19.243 | 489 |
| 8 | 203 | 19.064 | 738 | 7.407 | 188 | 21.657 | 550 |
| 10 | 254 | 31.892 | 810 | 7.821 | 199 | 24.071 | 611 |
| 12 | 305 | 34.721 | 882 | 8.235 | 209 | 26.485 | 673 |
| 14 | 356 | 37.549 | 954 | 8.649 | 220 | 28.889 | 734 |
| 16 | 406 | 40.377 | 1026 | 9.024 | 230 | 31.314 | 795 |
| 18 | 457 | 43.206 | 1097 | 9.478 | 241 | 33.728 | 857 |
| 20 | 508 | 46.034 | 1169 | 9.892 | 251 | 36.142 | 918 |
| 22 | 559 | 48.863 | 1241 | 10.306 | 262 | 38.556 | 979 |
| 24 | 610 | 51.691 | 1313 | 10.721 | 272 | 40.971 | 1041 |
| 26 | 660 | 54.520 | 1385 | 11.135 | 283 | 43.385 | 1102 |
| 28 | 711 | 57.348 | 1457 | 11.549 | 293 | 45.799 | 1163 |
| 30 | 762 | 60.176 | 1528 | 11.963 | 304 | 48.213 | 1225 |
| 32 | 813 | 63.005 | 1600 | 12.377 | 314 | 50.627 | 1286 |
| 34 | 864 | 65.833 | 1672 | 12.792 | 325 | 53.042 | 1347 |
| 36 | 914 | 68.662 | 1744 | 13.206 | 335 | 55.456 | 1409 |
| 38 | 965 | 71.490 | 1816 | 13.260 | 346 | 57.870 | 1470 |
| 40 | 1016 | 74.319 | 1888 | 14.034 | 356 | 60.284 | 1531 |
| 42 | 1067 | 77.147 | 1960 | 14.448 | 367 | 62.628 | 1593 |
| 44 | 1118 | 79.975 | 2031 | 14.863 | 378 | 65.113 | 1654 |
| 46 | 1168 | 82.804 | 2103 | 15.277 | 388 | 67.527 | 1715 |
| 48 | 1219 | 85.632 | 2175 | 15.691 | 399 | 69.941 | 1777 |

| GDPL4F | | | | | | | |
|--------|------|--------|------|--------|-----|--------|------|
| I.D. | | A | | B | | C | |
| in | mm | in | mm | in | mm | in | mm |
| 6 | 152 | 27.485 | 698 | 8.743 | 222 | 18.743 | 476 |
| 8 | 203 | 30.314 | 770 | 9.157 | 233 | 21.157 | 537 |
| 10 | 254 | 33.142 | 842 | 9.571 | 243 | 23.571 | 599 |
| 12 | 305 | 35.971 | 914 | 9.985 | 254 | 25.985 | 660 |
| 14 | 356 | 38.799 | 985 | 10.399 | 264 | 28.399 | 721 |
| 16 | 406 | 41.627 | 1057 | 10.814 | 275 | 30.814 | 783 |
| 18 | 457 | 44.456 | 1129 | 11.228 | 285 | 33.228 | 844 |
| 20 | 508 | 47.284 | 1201 | 11.642 | 296 | 35.642 | 905 |
| 22 | 559 | 50.113 | 1273 | 12.056 | 306 | 38.056 | 967 |
| 24 | 610 | 52.941 | 1345 | 12.471 | 317 | 40.471 | 1028 |
| 26 | 660 | 55.770 | 1417 | 12.885 | 327 | 42.885 | 1089 |
| 28 | 711 | 58.598 | 1488 | 13.299 | 338 | 45.299 | 1151 |
| 30 | 762 | 61.426 | 1560 | 13.713 | 348 | 47.713 | 1212 |
| 32 | 813 | 64.255 | 1632 | 14.127 | 359 | 50.127 | 1273 |
| 34 | 864 | 67.083 | 1704 | 14.542 | 369 | 52.542 | 1335 |
| 36 | 914 | 69.912 | 1776 | 14.956 | 380 | 54.956 | 1396 |
| 38 | 965 | 72.740 | 1848 | 15.370 | 390 | 57.370 | 1457 |
| 40 | 1016 | 75.569 | 1919 | 15.784 | 401 | 59.784 | 1519 |
| 42 | 1067 | 78.397 | 1991 | 16.198 | 411 | 62.198 | 1580 |
| 44 | 1118 | 81.225 | 2063 | 16.613 | 422 | 64.613 | 1641 |
| 46 | 1168 | 84.054 | 2135 | 17.027 | 432 | 67.027 | 1702 |
| 48 | 1219 | 86.882 | 2207 | 17.441 | 443 | 69.441 | 1764 |

ELBOWS

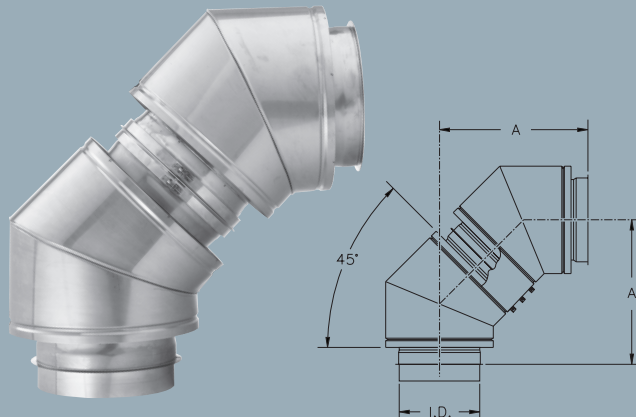
90° ELBOW • 2 x E45

Used to change orientation of flue or chimney by 90°.

Includes:

- 2 45° Elbows (E45)
- 2 Assembly bands (AB)
- 2 Finishing bands (FB)

K = 0.3



| GDPL • GDPL2F | | | | GDPL4F | | | |
|---------------|------|--------|------|--------|------|--------|------|
| I.D. | | A | | I.D. | | A | |
| in | mm | in | mm | in | mm | in | mm |
| 6 | 152 | 18.692 | 475 | 6 | 152 | 19.692 | 500 |
| 8 | 203 | 19.692 | 500 | 8 | 203 | 20.692 | 526 |
| 10 | 254 | 20.692 | 526 | 10 | 254 | 21.692 | 551 |
| 12 | 305 | 21.692 | 551 | 12 | 305 | 22.692 | 576 |
| 14 | 356 | 22.692 | 576 | 14 | 356 | 23.692 | 602 |
| 16 | 406 | 23.692 | 602 | 16 | 406 | 24.692 | 627 |
| 18 | 457 | 24.693 | 627 | 18 | 457 | 25.692 | 653 |
| 20 | 508 | 25.692 | 653 | 20 | 508 | 26.692 | 678 |
| 22 | 559 | 26.692 | 678 | 22 | 559 | 27.692 | 703 |
| 24 | 610 | 27.692 | 703 | 24 | 610 | 28.692 | 729 |
| 26 | 660 | 28.692 | 729 | 26 | 660 | 29.692 | 754 |
| 28 | 711 | 29.692 | 754 | 28 | 711 | 30.692 | 780 |
| 30 | 762 | 30.692 | 780 | 30 | 762 | 31.692 | 805 |
| 32 | 813 | 31.692 | 805 | 32 | 813 | 32.692 | 805 |
| 34 | 864 | 32.692 | 830 | 34 | 864 | 33.692 | 856 |
| 36 | 914 | 33.692 | 856 | 36 | 914 | 34.692 | 881 |
| 38 | 965 | 34.692 | 881 | 38 | 965 | 35.692 | 907 |
| 40 | 1016 | 35.692 | 907 | 40 | 1016 | 36.692 | 932 |
| 42 | 1067 | 36.692 | 932 | 42 | 1067 | 37.692 | 957 |
| 44 | 1118 | 37.692 | 957 | 44 | 1118 | 38.692 | 938 |
| 46 | 1168 | 38.692 | 983 | 46 | 1168 | 39.692 | 1008 |
| 48 | 1219 | 38.692 | 1008 | 48 | 1219 | 40.692 | 1034 |

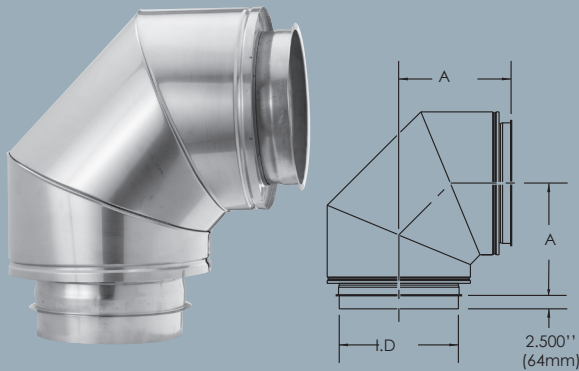
90° SHORT RADIUS ELBOW • E90

Used to change orientation of flue or chimney by 90°.

Includes:

- 1 Assembly band (AB)
- 1 Finishing band (FB)

K = 0.3



| GDPL • GDPL2F | | | | GDPL4F | | | |
|---------------|------|--------|-----|--------|------|--------|-----|
| I.D. | | A | | I.D. | | A | |
| in | mm | in | mm | in | mm | in | mm |
| 6 | 152 | 12.328 | 313 | 6 | 152 | 14.743 | 374 |
| 8 | 203 | 13.328 | 339 | 8 | 203 | 15.743 | 400 |
| 10 | 254 | 14.328 | 364 | 10 | 254 | 16.743 | 425 |
| 12 | 305 | 15.328 | 389 | 12 | 305 | 17.743 | 451 |
| 14 | 356 | 16.328 | 415 | 14 | 356 | 18.743 | 476 |
| 16 | 406 | 17.328 | 440 | 16 | 406 | 19.743 | 501 |
| 18 | 457 | 18.328 | 466 | 18 | 457 | 20.743 | 527 |
| 20 | 508 | 19.328 | 491 | 20 | 508 | 21.743 | 552 |
| 22 | 559 | 20.328 | 516 | 22 | 559 | 22.743 | 578 |
| 24 | 610 | 21.328 | 542 | 24 | 610 | 23.743 | 603 |
| 26 | 660 | 22.328 | 567 | 26 | 660 | 24.743 | 628 |
| 28 | 711 | 23.328 | 593 | 28 | 711 | 25.743 | 654 |
| 30 | 762 | 24.328 | 618 | 30 | 762 | 26.743 | 679 |
| 32 | 813 | 25.328 | 643 | 32 | 813 | 27.743 | 705 |
| 34 | 864 | 26.328 | 669 | 34 | 864 | 28.743 | 730 |
| 36 | 914 | 27.328 | 694 | 36 | 914 | 29.743 | 755 |
| 38 | 965 | 28.328 | 720 | 38 | 965 | 30.743 | 781 |
| 40 | 1016 | 29.328 | 745 | 40 | 1016 | 31.743 | 806 |
| 42 | 1067 | 30.328 | 770 | 42 | 1067 | 32.743 | 832 |
| 44 | 1118 | 31.328 | 796 | 44 | 1118 | 33.743 | 857 |
| 46 | 1168 | 32.328 | 821 | 46 | 1168 | 34.743 | 882 |
| 48 | 1219 | 33.328 | 847 | 48 | 1219 | 35.743 | 908 |

FITTINGS

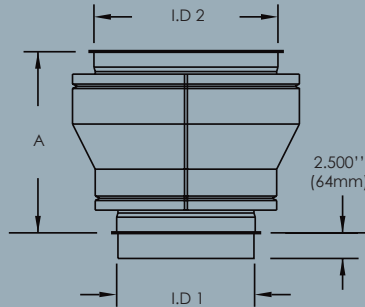
INCREASER • I

Used to increase the diameter of the flue or chimney. Specify the diameter of the inlet and outlet of the fitting.

Includes:

- 1 Assembly band (I.D. 2) (AB)
- 1 Finishing band (O.D. 2) (FB)

$$K = 0.5 \left(1 - \left(\frac{I.D.1}{I.D.2} \right)^2 \right)^2$$



| Difference between I.D. 2 - I.D. 1 | GDPL • GDPL2F • GDPL4F | |
|------------------------------------|------------------------|-----|
| | Dim. A | |
| | in | mm |
| 2 | 15.000 | 381 |
| 4 | 19.000 | 483 |
| 6 | 23.000 | 585 |
| 8 | 27.000 | 687 |
| 10 | 31.000 | 789 |

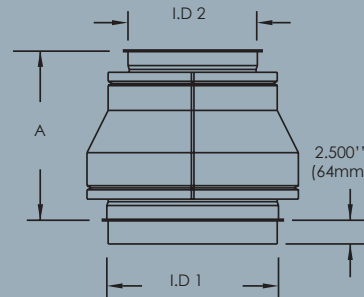
REDUCER • R

Used to reduce the diameter of the flue. Specify the diameter of the inlet and outlet of the fitting.

Includes:

- 1 Assembly band (I.D. 2) (AB)
- 1 Finishing band (O.D. 2) (FB)

$$K = 0.5 \left(1 - \left(\frac{I.D.1}{I.D.2} \right)^2 \right)^2$$



| Difference between I.D. 2 - I.D. 1 | GDPL • GDPL2F • GDPL4F | |
|------------------------------------|------------------------|-----|
| | Dim. A | |
| | in | mm |
| 2 | 15.000 | 381 |
| 4 | 19.000 | 483 |
| 6 | 23.000 | 585 |
| 8 | 27.000 | 687 |
| 10 | 31.000 | 789 |

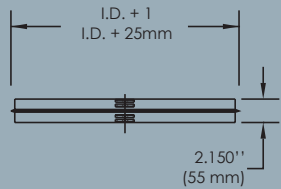
FITTINGS

ASSEMBLY BAND • AB

Used to assemble the inner walls of two components. Ensures sealing and rigidity of the system. To be used with a Low (LTS) or a High Temperature Sealant (HTS) (see assembly details).

Includes:

- 2 Hexagonal screws
- 2 Square nuts

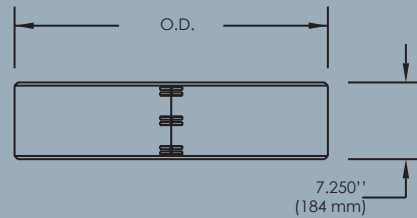
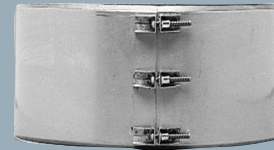


FINISHING BAND • FB

Used to assemble the outer walls of two components. Ensures sealing and rigidity of double wall systems. To be used with an Exterior Sealant (ES) on outside exposed parts.

Includes:

- 3 Hexagonal screws
- 3 Square nut
- 1 Insulation strip for GDPL2F systems

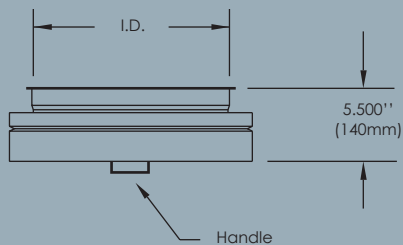
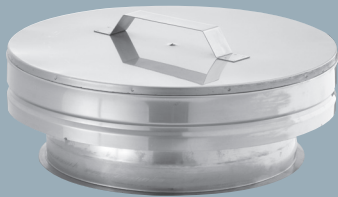


TEE CAP • TC

Used to block one of the openings of horizontal or vertical tee. Removable, it facilitates access for inspection and maintenance of the chimney.

Includes:

- 1 Assembly band (AB)
- 1 Finishing band (AB)

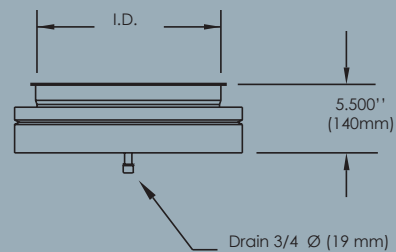
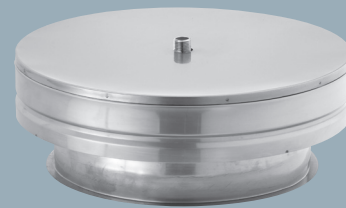


DRAIN-TEE CAP • DC

Used to cover one of the vertical openings of tee. For collection of rainwater or condensation water. Removable, it facilitates access for inspection and maintenance of the chimney. To be connected to a drain of 3/4ø (19mm) - NPT.

Includes:

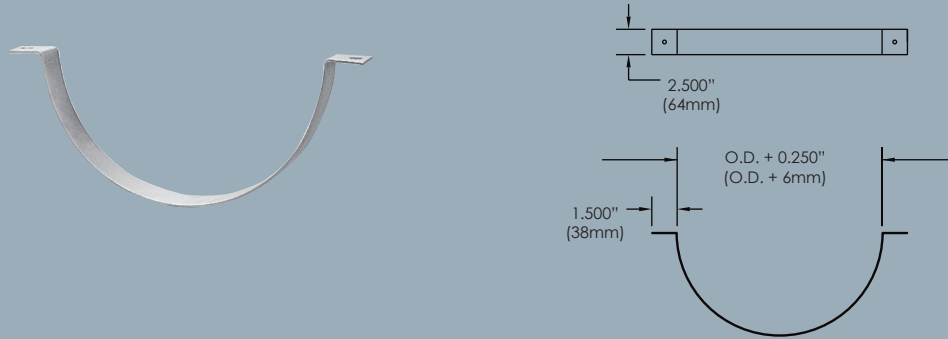
- 1 Assembly band (AB)
- 1 Finishing band (FB)



SUPPORTS

HANGER BRACKET • HB

Used to support the flue in horizontal runs. To be installed by means of 3/8"Ø (19mm) threaded rods (not included). Generally installed every 5'-0" (1525mm).



ROOF SUPPORT • RS

Used to support and guide the portion of the chimney which extends to the roof. It is attached to the roof curb by means of four (4) angles. It keeps a minimum distance between the chimney and combustible materials at the roof.



| GDPL • GDPL2F | | GDPL4F | | A | |
|---------------|--------------|--------------|--------------|--------|-----|
| I.D. | | I.D. | | | |
| in | mm | in | mm | in | mm |
| 6'' to 14'' | 152 to 356 | 6'' to 10'' | 152 to 254 | 5.250 | 133 |
| 16'' to 22'' | 406 to 559 | 12'' to 18'' | 305 to 457 | 7.250 | 184 |
| 24'' to 32'' | 610 to 813 | 20'' to 28'' | 508 to 711 | 9.250 | 235 |
| 34'' to 42'' | 965 to 1067 | 30'' to 38'' | 792 to 965 | 11.250 | 286 |
| 44'' to 48'' | 1118 to 1219 | 40'' to 48'' | 1016 to 1219 | 13.250 | 337 |

SUPPORTS

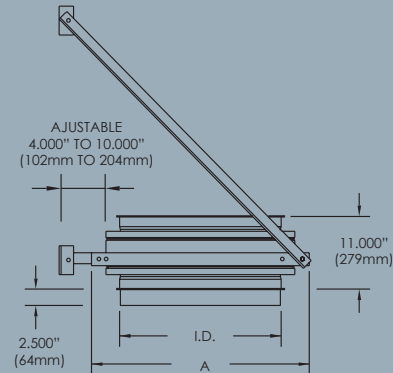
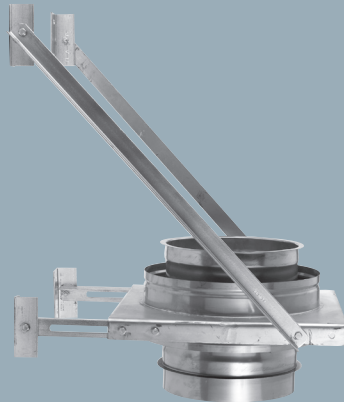
WALL SUPPORT • WS

Used to support the chimney in vertical runs. It keeps the chimney at an adjustable distance between 4" (102mm) and 10" (254mm) from the wall. The oblique braces may be attached to the wall either above or below the supporting surface.

Includes:

- 1 Assembly band (AB)
- 1 Finishing band (FB)
- 2 Adjustable angles
- 2 Braces
- 4 Wall brackets

K = Same as pipe length



| GDPL • GDPL2F | | | |
|---------------|------|--------|------|
| I.D. | | A | |
| in | mm | in | mm |
| 6 | 152 | 14.000 | 356 |
| 8 | 203 | 16.000 | 406 |
| 10 | 254 | 18.000 | 457 |
| 12 | 305 | 20.000 | 508 |
| 14 | 356 | 22.000 | 559 |
| 16 | 406 | 24.000 | 610 |
| 18 | 457 | 26.000 | 660 |
| 20 | 508 | 28.000 | 711 |
| 22 | 559 | 30.000 | 762 |
| 24 | 610 | 32.000 | 813 |
| 26 | 660 | 34.000 | 864 |
| 28 | 711 | 36.000 | 914 |
| 30 | 762 | 38.000 | 965 |
| 32 | 813 | 40.000 | 1016 |
| 34 | 864 | 42.000 | 1067 |
| 36 | 914 | 44.000 | 1118 |
| 38 | 965 | 46.000 | 1168 |
| 40 | 1016 | 48.000 | 1219 |
| 42 | 1067 | 50.000 | 1270 |
| 44 | 1118 | 52.000 | 1321 |
| 46 | 1168 | 54.000 | 1372 |
| 48 | 1219 | 56.000 | 1422 |

| GDPL4F | | | |
|--------|------|--------|------|
| I.D. | | A | |
| in | mm | in | mm |
| 6 | 152 | 18.000 | 457 |
| 8 | 203 | 20.000 | 508 |
| 10 | 254 | 22.000 | 559 |
| 12 | 305 | 24.000 | 610 |
| 14 | 356 | 26.000 | 660 |
| 16 | 406 | 28.000 | 711 |
| 18 | 457 | 30.000 | 762 |
| 20 | 508 | 32.000 | 813 |
| 22 | 559 | 34.000 | 864 |
| 24 | 610 | 36.000 | 914 |
| 26 | 660 | 38.000 | 965 |
| 28 | 711 | 40.000 | 1016 |
| 30 | 762 | 42.000 | 1067 |
| 32 | 813 | 44.000 | 1118 |
| 34 | 864 | 46.000 | 1168 |
| 36 | 914 | 48.000 | 1219 |
| 38 | 965 | 50.000 | 1270 |
| 40 | 1016 | 52.000 | 1321 |
| 42 | 1067 | 54.000 | 1372 |
| 44 | 1118 | 56.000 | 1422 |
| 46 | 1168 | 58.000 | 1473 |
| 48 | 1219 | 60.000 | 1524 |

SUPPORTS

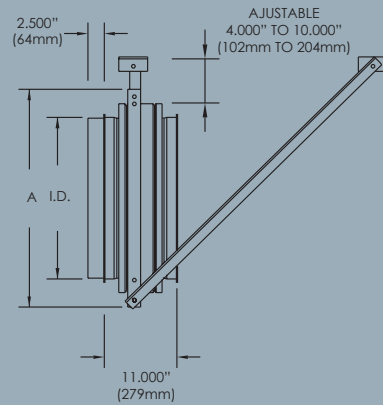
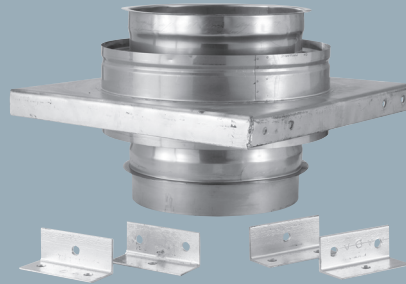
HORIZONTAL SUPPORT • HS

Used to support the flue in horizontal runs. It keeps the flue at an adjustable distance from the ceiling. The oblique braces (not included) may be attached to the ceiling either ahead of or behind the supporting surface.

Includes:

- 1 Assembly band (AB)
- 1 Finishing band (FB)
- 4 Wall brackets

K = Same as pipe length



| GDPL • GDPL2F | | | |
|---------------|------|--------|------|
| I.D. | | A | |
| in | mm | in | mm |
| 6 | 152 | 14.000 | 356 |
| 8 | 203 | 16.000 | 406 |
| 10 | 254 | 18.000 | 457 |
| 12 | 305 | 20.000 | 508 |
| 14 | 356 | 22.000 | 559 |
| 16 | 406 | 24.000 | 610 |
| 18 | 457 | 26.000 | 660 |
| 20 | 508 | 28.000 | 711 |
| 22 | 559 | 30.000 | 762 |
| 24 | 610 | 32.000 | 813 |
| 26 | 660 | 34.000 | 864 |
| 28 | 711 | 36.000 | 914 |
| 30 | 762 | 38.000 | 965 |
| 32 | 813 | 40.000 | 1016 |
| 34 | 864 | 42.000 | 1067 |
| 36 | 914 | 44.000 | 1118 |
| 38 | 965 | 46.000 | 1168 |
| 40 | 1016 | 48.000 | 1219 |
| 42 | 1067 | 50.000 | 1270 |
| 44 | 1118 | 52.000 | 1321 |
| 46 | 1168 | 54.000 | 1372 |
| 48 | 1219 | 56.000 | 1422 |

| GDPL4F | | | |
|--------|------|--------|------|
| I.D. | | A | |
| in | mm | in | mm |
| 6 | 152 | 18.000 | 457 |
| 8 | 203 | 20.000 | 508 |
| 10 | 254 | 22.000 | 559 |
| 12 | 305 | 24.000 | 610 |
| 14 | 356 | 26.000 | 660 |
| 16 | 406 | 28.000 | 711 |
| 18 | 457 | 30.000 | 762 |
| 20 | 508 | 32.000 | 813 |
| 22 | 559 | 34.000 | 864 |
| 24 | 610 | 36.000 | 914 |
| 26 | 660 | 38.000 | 965 |
| 28 | 711 | 40.000 | 1016 |
| 30 | 762 | 42.000 | 1067 |
| 32 | 813 | 44.000 | 1118 |
| 34 | 864 | 46.000 | 1168 |
| 36 | 914 | 48.000 | 1219 |
| 38 | 965 | 50.000 | 1270 |
| 40 | 1016 | 52.000 | 1321 |
| 42 | 1067 | 54.000 | 1372 |
| 44 | 1118 | 56.000 | 1422 |
| 46 | 1168 | 58.000 | 1473 |
| 48 | 1219 | 60.000 | 1524 |

SUPPORT AND GUIDES

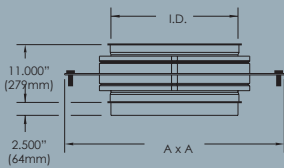
ANCHOR PLATE • AP

Used to support the chimney in vertical runs. It is attached to the floor by means of anchors (not included). It is designed to be supported on four (4) sides. Structural angles may be used to support sides that are unsupported.

Includes:

- 1 Assembly band (AB)
- 1 Finishing band (FB)

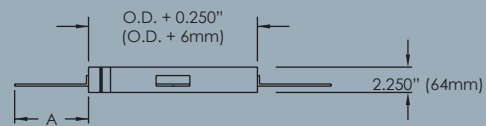
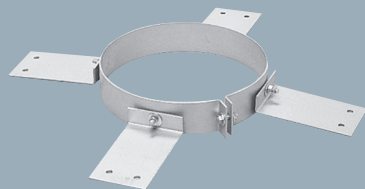
K = Same as pipe length



| GDPL • GDPL2F | | | | GDPL4F | | | |
|---------------|------|--------|------|--------|------|--------|------|
| I.D. | | A | | I.D. | | A | |
| in | mm | in | mm | in | mm | in | mm |
| 6 | 152 | 22.000 | 559 | 6 | 152 | 26.000 | 660 |
| 8 | 203 | 24.000 | 610 | 8 | 203 | 28.000 | 711 |
| 10 | 254 | 26.000 | 660 | 10 | 254 | 30.000 | 764 |
| 12 | 305 | 28.000 | 711 | 12 | 305 | 32.000 | 813 |
| 14 | 356 | 30.000 | 762 | 14 | 356 | 34.000 | 864 |
| 16 | 406 | 32.000 | 813 | 16 | 406 | 36.000 | 914 |
| 18 | 457 | 34.000 | 864 | 18 | 457 | 38.000 | 965 |
| 20 | 508 | 36.000 | 914 | 20 | 508 | 40.000 | 1016 |
| 22 | 559 | 38.000 | 965 | 22 | 559 | 42.000 | 1068 |
| 24 | 610 | 40.000 | 1016 | 24 | 610 | 44.000 | 1118 |
| 26 | 660 | 42.000 | 1068 | 26 | 660 | 46.000 | 1168 |
| 28 | 711 | 44.000 | 1118 | 28 | 711 | 48.000 | 1219 |
| 30 | 762 | 46.000 | 1168 | 30 | 762 | 50.000 | 1270 |
| 32 | 813 | 48.000 | 1219 | 32 | 813 | 52.000 | 1321 |
| 34 | 864 | 50.000 | 1270 | 34 | 864 | 54.000 | 1372 |
| 36 | 914 | 52.000 | 1321 | 36 | 914 | 56.000 | 1422 |
| 38 | 965 | 54.000 | 1372 | 38 | 965 | 58.000 | 1473 |
| 40 | 1016 | 56.000 | 1422 | 40 | 1016 | 60.000 | 1524 |
| 42 | 1067 | 58.000 | 1473 | 42 | 1067 | 62.000 | 1575 |
| 44 | 1118 | 60.000 | 1524 | 44 | 1118 | 64.000 | 1626 |
| 46 | 1168 | 62.000 | 1575 | 46 | 1168 | 66.000 | 1676 |
| 48 | 1219 | 64.000 | 1626 | 48 | 1219 | 68.000 | 1727 |

FLOOR GUIDE • FG

Used as a guide at floor penetrations. It is attached to the floor by means of four (4) angles. It keeps a minimum distance between the chimney and combustible floor materials.



| GDPL • GDPL2F | | GDPL4F | | A | |
|---------------|--------------|------------|--------------|--------|-----|
| I.D. | | I.D. | | | |
| in | mm | in | mm | in | mm |
| 6" to 14" | 152 to 356 | 6" to 10" | 152 to 254 | 5.250 | 133 |
| 16" to 22" | 406 to 559 | 12" to 18" | 305 to 457 | 7.250 | 184 |
| 24" to 32" | 610 to 813 | 20" to 28" | 508 to 711 | 9.250 | 235 |
| 34" to 42" | 965 to 1067 | 30" to 38" | 792 to 965 | 11.250 | 286 |
| 44" to 48" | 1118 to 1219 | 40" to 48" | 1016 to 1219 | 13.250 | 337 |

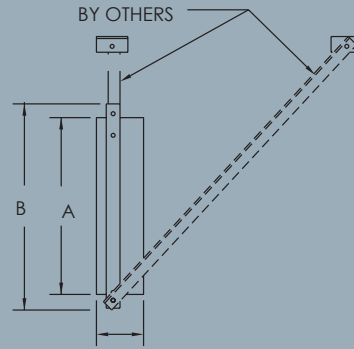
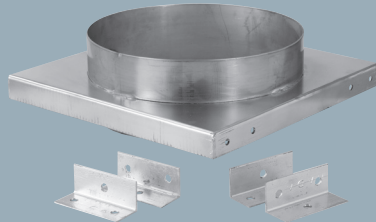
GUIDES

WALL GUIDE • WG

Used as a guide and to allow for expansion of the flue or chimney. It may be used either horizontally or vertically. The oblique braces (not included) may be attached above or below the guide plate.

Includes:

4 Wall brackets



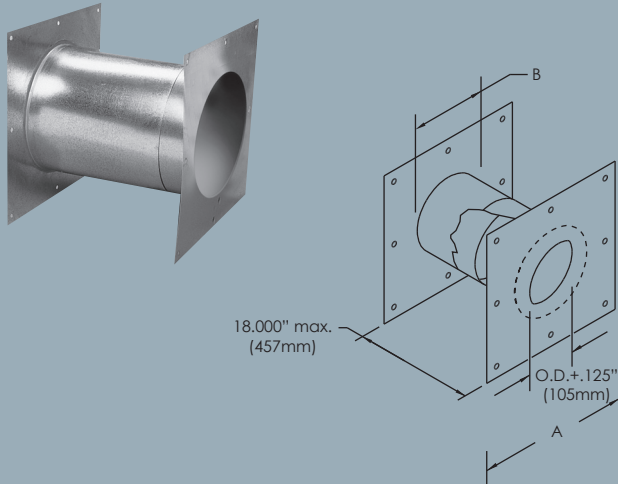
| GDPL • GDPL2F | | | | | |
|---------------|------|--------|------|--------|------|
| I.D. | | A | | B | |
| in | mm | in | mm | in | mm |
| 6 | 152 | 10.250 | 260 | 14.000 | 356 |
| 8 | 203 | 12.250 | 311 | 16.000 | 406 |
| 10 | 254 | 14.250 | 362 | 18.000 | 457 |
| 12 | 305 | 16.250 | 413 | 20.000 | 508 |
| 14 | 356 | 18.250 | 464 | 22.000 | 559 |
| 16 | 406 | 20.250 | 514 | 24.000 | 610 |
| 18 | 457 | 22.250 | 565 | 26.000 | 660 |
| 20 | 508 | 24.250 | 616 | 28.000 | 711 |
| 22 | 559 | 26.250 | 667 | 30.000 | 762 |
| 24 | 610 | 28.250 | 718 | 32.000 | 813 |
| 26 | 660 | 30.250 | 768 | 34.000 | 864 |
| 28 | 711 | 32.250 | 819 | 36.000 | 914 |
| 30 | 762 | 34.250 | 870 | 38.000 | 965 |
| 32 | 813 | 36.250 | 921 | 40.000 | 1016 |
| 34 | 864 | 38.250 | 972 | 42.000 | 1068 |
| 36 | 914 | 40.250 | 1022 | 44.000 | 1118 |
| 38 | 965 | 42.250 | 1073 | 46.000 | 1168 |
| 40 | 1016 | 44.250 | 1124 | 48.000 | 1219 |
| 42 | 1067 | 46.250 | 1175 | 50.000 | 1270 |
| 44 | 1118 | 48.250 | 1226 | 52.000 | 1321 |
| 46 | 1168 | 50.250 | 1276 | 54.000 | 1372 |
| 48 | 1219 | 52.250 | 1327 | 56.000 | 1422 |

| GDPL4F | | | | | |
|--------|------|--------|------|--------|------|
| I.D. | | A | | B | |
| in | mm | in | mm | in | mm |
| 6 | 152 | 14.250 | 362 | 18.000 | 457 |
| 8 | 203 | 16.250 | 413 | 20.000 | 508 |
| 10 | 254 | 18.250 | 464 | 22.000 | 559 |
| 12 | 305 | 20.250 | 514 | 24.000 | 610 |
| 14 | 356 | 22.250 | 565 | 26.000 | 660 |
| 16 | 406 | 24.250 | 616 | 28.000 | 711 |
| 18 | 457 | 26.250 | 667 | 30.000 | 762 |
| 20 | 508 | 28.250 | 718 | 32.000 | 813 |
| 22 | 559 | 30.250 | 768 | 34.000 | 864 |
| 24 | 610 | 32.250 | 819 | 36.000 | 914 |
| 26 | 660 | 34.250 | 870 | 38.000 | 965 |
| 28 | 711 | 36.250 | 921 | 40.000 | 1016 |
| 30 | 762 | 38.250 | 972 | 42.000 | 1068 |
| 32 | 813 | 40.250 | 1022 | 44.000 | 1118 |
| 34 | 864 | 42.250 | 1073 | 46.000 | 1168 |
| 36 | 914 | 44.250 | 1124 | 48.000 | 1219 |
| 38 | 965 | 46.250 | 1175 | 50.000 | 1270 |
| 40 | 1016 | 48.250 | 1225 | 52.000 | 1321 |
| 42 | 1067 | 50.250 | 1276 | 54.000 | 1372 |
| 44 | 1118 | 52.250 | 1327 | 56.000 | 1422 |
| 46 | 1168 | 54.250 | 1378 | 58.000 | 1473 |
| 48 | 1219 | 56.250 | 1429 | 60.000 | 1524 |

FIRESTOPS AND GUIDES

WALL FIRESTOP • WFS

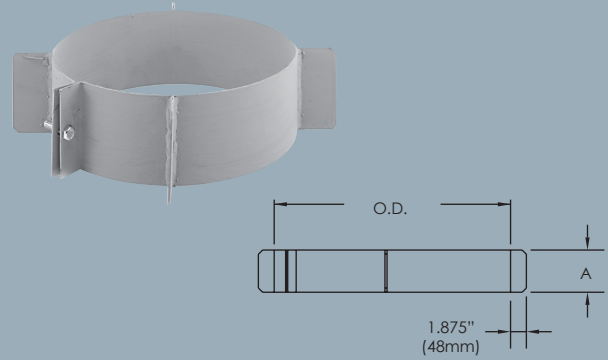
Used to keep a minimum clearance from combustible materials where the flue passes through a wall.



GDP, GDPL, GDPL2F et GDPL4F:
A = O.D + 2*Clearance + 8
B = O.D + *Clearance

GUIDING SPACER • GS

Used to guide the flue or the chimney against the inner wall of the sleeves it passes through. It holds the chimney at a distance of 2" (51mm) from the wall firestop (WFS), insulated wall firestop (IFS) or an insulated sleeve (IS).



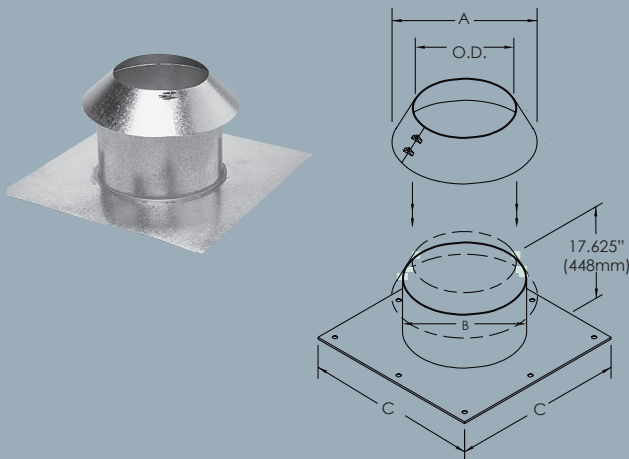
| GDPL • GDPL2F | | GDPL4F | | A | |
|---------------|-------------|------------|--------------|-------|-----|
| I.D. | | I.D. | | | |
| in | mm | in | mm | in | mm |
| 6" to 16" | 152 to 406 | 10" to 20" | 254 to 508 | 4.000 | 102 |
| 18" to 36" | 457 to 914 | 22" to 40" | 559 to 1016 | 6.000 | 152 |
| 38" to 48" | 965 to 1219 | 42" to 52" | 1067 to 1321 | 8.000 | 203 |

RADIANT FIRESTOP • RFS

Used to protect combustible materials where a chimney passes through an attic. It ensures a minimum distance from combustible materials.

Includes:

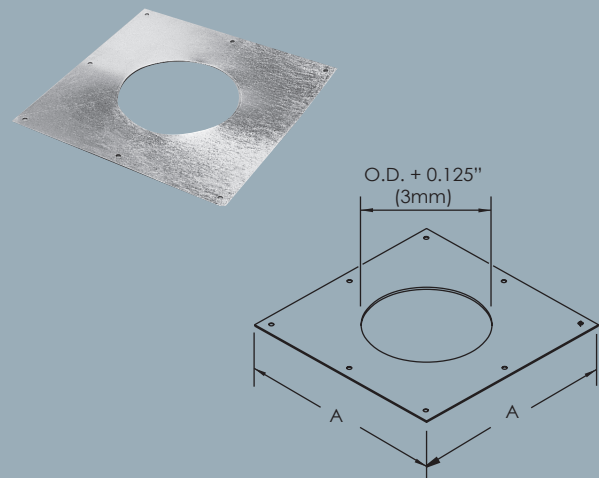
- 1 Protecting collar



GDP, GDPL, GDPL2F et GDPL4F:
A = O.D + 2*Clearance + 4
B = O.D + 2*Clearance
C = O.D + 2*Clearance + 12

FIRESTOP • FS

Used to keep space between any combustible material of a wall, floor or roof, where a flue or chimney penetrates.



GDP, GDPL, GDPL2F et GDPL4F:
A = O.D + 2*Clearance + 8

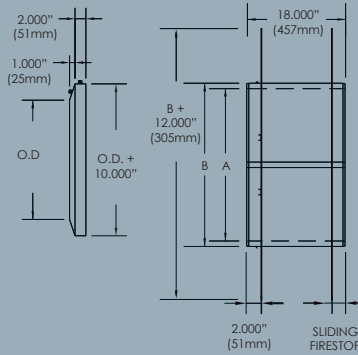
FIRESTOPS

INSULATED WALL FIRESTOP • IFS

Used to protect combustible materials where a flue or chimney passes through a wall. It ensures a minimum space of 2" (51 mm) from combustible materials, in addition to reducing excessive heat by means of its double wall and 2" (51 mm) high temperature insulation.

Includes:

- 1 Finishing collar
- 1 Firestop



| GDPL • GDPL2F | | | | | |
|---------------|------|--------|------|--------|------|
| I.D. | | A | | B | |
| in | mm | in | mm | in | mm |
| 6 | 152 | 14.000 | 356 | 18.000 | 457 |
| 8 | 203 | 16.000 | 406 | 20.000 | 508 |
| 10 | 254 | 18.000 | 457 | 22.000 | 559 |
| 12 | 305 | 20.000 | 508 | 24.000 | 610 |
| 14 | 356 | 22.000 | 559 | 26.000 | 660 |
| 16 | 406 | 24.000 | 610 | 28.000 | 711 |
| 18 | 457 | 26.000 | 660 | 30.000 | 762 |
| 20 | 508 | 28.000 | 711 | 32.000 | 813 |
| 22 | 559 | 30.000 | 762 | 34.000 | 864 |
| 24 | 610 | 32.000 | 813 | 36.000 | 914 |
| 26 | 660 | 34.000 | 864 | 38.000 | 965 |
| 28 | 711 | 36.000 | 914 | 40.000 | 1016 |
| 30 | 762 | 38.000 | 965 | 42.000 | 1067 |
| 32 | 813 | 40.000 | 1016 | 44.000 | 1118 |
| 34 | 864 | 42.000 | 1067 | 46.000 | 1168 |
| 36 | 914 | 44.000 | 1118 | 48.000 | 1219 |
| 38 | 965 | 46.000 | 1168 | 50.000 | 1270 |
| 40 | 1016 | 48.000 | 1219 | 52.000 | 1321 |
| 42 | 1067 | 50.000 | 1270 | 54.000 | 1372 |
| 44 | 1118 | 52.000 | 1321 | 56.000 | 1422 |
| 46 | 1168 | 54.000 | 1372 | 58.000 | 1473 |
| 48 | 1219 | 56.000 | 1422 | 60.000 | 1525 |

| GDPL4F | | | | | |
|--------|------|--------|------|--------|------|
| I.D. | | A | | B | |
| in | mm | in | mm | in | mm |
| 6 | 152 | 18.000 | 457 | 22.000 | 559 |
| 8 | 203 | 20.000 | 508 | 24.000 | 610 |
| 10 | 254 | 22.000 | 559 | 26.000 | 660 |
| 12 | 305 | 24.000 | 610 | 28.000 | 711 |
| 14 | 356 | 26.000 | 660 | 30.000 | 762 |
| 16 | 406 | 28.000 | 711 | 32.000 | 813 |
| 18 | 457 | 30.000 | 762 | 34.000 | 864 |
| 20 | 508 | 32.000 | 813 | 36.000 | 914 |
| 22 | 559 | 34.000 | 864 | 38.000 | 965 |
| 24 | 610 | 36.000 | 914 | 40.000 | 1016 |
| 26 | 660 | 38.000 | 965 | 42.000 | 1067 |
| 28 | 711 | 40.000 | 1016 | 44.000 | 1118 |
| 30 | 762 | 42.000 | 1067 | 46.000 | 1168 |
| 32 | 813 | 44.000 | 1118 | 48.000 | 1219 |
| 34 | 864 | 46.000 | 1168 | 50.000 | 1270 |
| 36 | 914 | 48.000 | 1219 | 52.000 | 1321 |
| 38 | 965 | 50.000 | 1270 | 54.000 | 1372 |
| 40 | 1016 | 52.000 | 1321 | 56.000 | 1422 |
| 42 | 1067 | 54.000 | 1372 | 58.000 | 1473 |
| 44 | 1118 | 56.000 | 1422 | 60.000 | 1525 |
| 46 | 1168 | 58.000 | 1473 | 62.000 | 1575 |
| 48 | 1219 | 60.000 | 1525 | 64.000 | 1626 |

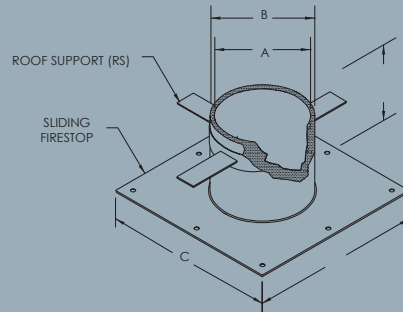
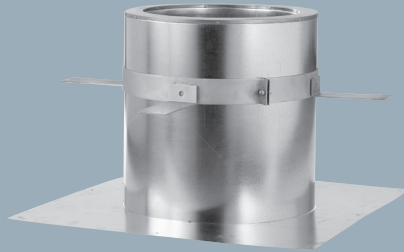
FIRESTOPS

INSULATED SLEEVE • IS

Used to protect combustible materials where a flue or chimney passes through a wall or floor. It ensures a minimum space of 2" (51mm) from combustible materials, in addition to reducing excessive heat by means of its double wall and 2" (51mm) high temperature insulation.

Includes:

- 1 Firestops
- 1 Roof Support



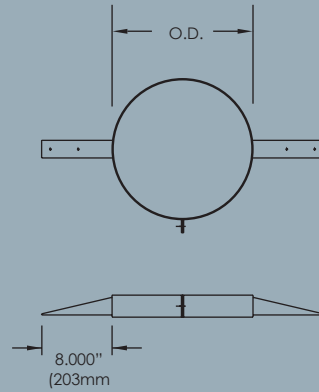
| GDPL • GDPL2F | | | | | | | |
|---------------|------|--------|------|--------|------|--------|------|
| I.D. | | A | | B | | C | |
| in | mm | in | mm | in | mm | in | mm |
| 6 | 152 | 14.000 | 356 | 18.000 | 457 | 30.000 | 762 |
| 8 | 203 | 16.000 | 406 | 20.000 | 508 | 32.000 | 813 |
| 10 | 254 | 18.000 | 457 | 22.000 | 559 | 34.000 | 864 |
| 12 | 305 | 20.000 | 508 | 24.000 | 610 | 36.000 | 914 |
| 14 | 356 | 22.000 | 559 | 26.000 | 660 | 38.000 | 965 |
| 16 | 406 | 24.000 | 610 | 28.000 | 711 | 40.000 | 1016 |
| 18 | 457 | 26.000 | 660 | 30.000 | 762 | 42.000 | 1067 |
| 20 | 508 | 28.000 | 711 | 32.000 | 813 | 44.000 | 1118 |
| 22 | 559 | 30.000 | 762 | 34.000 | 864 | 46.000 | 1168 |
| 24 | 610 | 32.000 | 813 | 36.000 | 914 | 48.000 | 1219 |
| 26 | 660 | 34.000 | 894 | 38.000 | 965 | 50.000 | 1270 |
| 28 | 711 | 36.000 | 914 | 40.000 | 1016 | 52.000 | 1321 |
| 30 | 762 | 38.000 | 965 | 42.000 | 1067 | 54.000 | 1372 |
| 32 | 813 | 40.000 | 1016 | 44.000 | 1118 | 56.000 | 1422 |
| 34 | 864 | 42.000 | 1067 | 46.000 | 1168 | 58.000 | 1473 |
| 36 | 914 | 44.000 | 1118 | 48.000 | 1219 | 60.000 | 1525 |
| 38 | 965 | 46.000 | 1168 | 50.000 | 1270 | 62.000 | 1575 |
| 40 | 1016 | 48.000 | 1219 | 52.000 | 1321 | 64.000 | 1626 |
| 42 | 1067 | 50.000 | 1270 | 54.000 | 1372 | 66.000 | 1676 |
| 44 | 1118 | 52.000 | 1321 | 56.000 | 1422 | 68.000 | 1727 |
| 46 | 1168 | 54.000 | 1372 | 58.000 | 1473 | 70.000 | 1778 |
| 48 | 1219 | 56.000 | 1422 | 60.000 | 1525 | 72.000 | 1829 |

| GDPL4F | | | | | | | |
|--------|------|--------|------|--------|------|--------|------|
| I.D. | | A | | B | | C | |
| in | mm | in | mm | in | mm | in | mm |
| 6 | 152 | 18.000 | 457 | 22.000 | 559 | 34.000 | 864 |
| 8 | 203 | 20.000 | 508 | 24.000 | 610 | 36.000 | 914 |
| 10 | 254 | 22.000 | 559 | 26.000 | 660 | 38.000 | 965 |
| 12 | 305 | 24.000 | 610 | 28.000 | 711 | 40.000 | 1016 |
| 14 | 356 | 26.000 | 660 | 30.000 | 762 | 42.000 | 1068 |
| 16 | 406 | 28.000 | 711 | 32.000 | 813 | 44.000 | 1118 |
| 18 | 457 | 30.000 | 762 | 34.000 | 864 | 46.000 | 1168 |
| 20 | 508 | 32.000 | 813 | 36.000 | 914 | 48.000 | 1219 |
| 22 | 559 | 34.000 | 894 | 38.000 | 965 | 50.000 | 1270 |
| 24 | 610 | 36.000 | 914 | 40.000 | 1016 | 52.000 | 1321 |
| 26 | 660 | 38.000 | 965 | 42.000 | 1068 | 54.000 | 1372 |
| 28 | 711 | 40.000 | 1016 | 44.000 | 1118 | 56.000 | 1422 |
| 30 | 762 | 42.000 | 1068 | 46.000 | 1168 | 58.000 | 1473 |
| 32 | 813 | 44.000 | 1118 | 48.000 | 1219 | 60.000 | 1524 |
| 34 | 864 | 46.000 | 1168 | 50.000 | 1270 | 62.000 | 1575 |
| 36 | 914 | 48.000 | 1219 | 52.000 | 1321 | 64.000 | 1626 |
| 38 | 965 | 50.000 | 1270 | 54.000 | 1372 | 66.000 | 1676 |
| 40 | 1016 | 52.000 | 1321 | 56.000 | 1422 | 68.000 | 1727 |
| 42 | 1067 | 54.000 | 1372 | 58.000 | 1473 | 70.000 | 1778 |
| 44 | 1118 | 56.000 | 1422 | 60.000 | 1524 | 72.000 | 1829 |
| 46 | 1168 | 58.000 | 1473 | 62.000 | 1575 | 74.000 | 1880 |
| 48 | 1219 | 60.000 | 1524 | 64.000 | 1626 | 76.000 | 1930 |

BANDS

SUSPENSION BAND • SB

Used to stabilize and support a flue or chimney in vertical runs. It avoids the transfer of the flue weight to the appliance. To be used with threaded rods (not included)

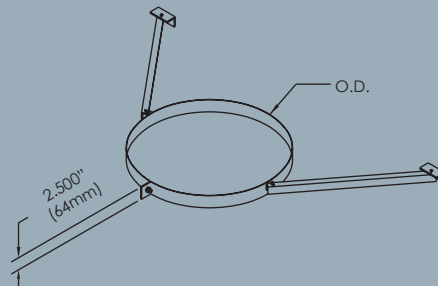
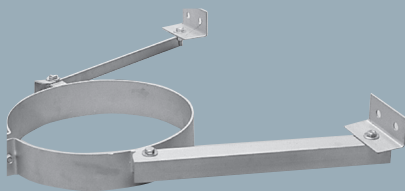


WALL BAND • WB

Used to stabilize the chimney along a vertical wall. The maximum recommended spacing between wall bands is 10'-0" (3048mm).

Includes:

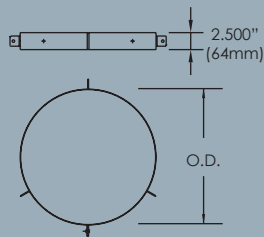
- 1 Wall brackets
- 1 Stabilizing angles



BAND, COLLARS AND FLASHING

GUY WIRE BAND • GWB

Used to stabilize a chimney laterally where it extends more than 10'-0" (3048mm) above the roof or for locations exposed to strong winds. It is attached to the chimney and is designed to receive 3 guy wires 120° apart (not included). It may be manufactured to receive 4 guy wires 90° apart.

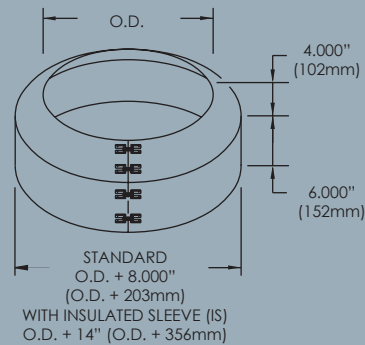


VENTILATED COLLAR • VC • SVC

Used to seal the space between the chimney and flashing. The ventilated collar must be sealed to the chimney with appropriate sealant. It is supplied with ventilated flashing.

Includes:

1 Socket head cap screws

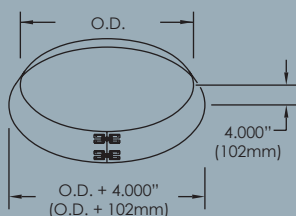


STORM COLLAR • SC

Used to seal the space between the chimney and flashing. The storm collar must be sealed to the chimney with appropriate sealant. It is supplied with flashing for flat roofs of adjustable flashing.

Includes:

1 Socket head cap screws

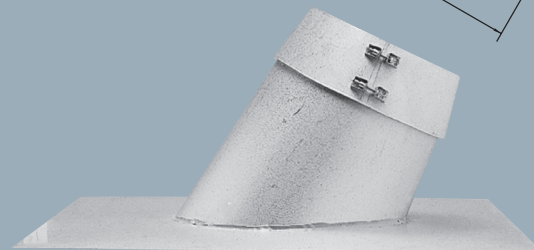
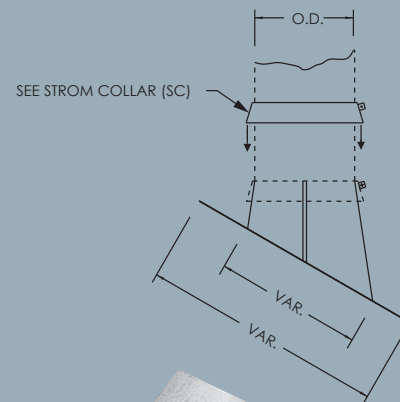


ADJUSTABLE FLASHING • AF

Used to seal the space between the chimney and the roof. Specify the roof slope when ordering.

Includes:

1 Storm collar (SC)



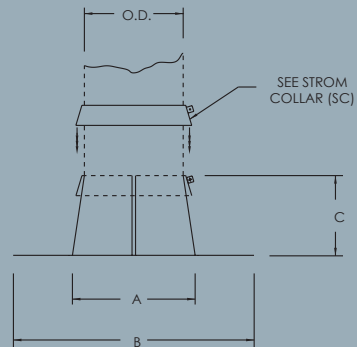
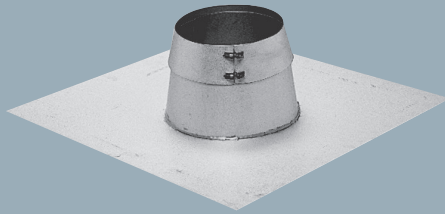
FLASHINGS

FLAT FLASHING • F

Used to seal the space between the chimney and the roof.

Includes:

- 1 Storm collar (SC)



| GDPL • GDPL2F | | | | | |
|---------------|------|--------|------|--------|-----|
| I.D. | | A | | C | |
| in | mm | in | mm | in | mm |
| 6 | 152 | 13.000 | 300 | 12.000 | 305 |
| 8 | 203 | 15.000 | 381 | 12.000 | 305 |
| 10 | 254 | 17.000 | 432 | 12.000 | 305 |
| 12 | 305 | 19.000 | 483 | 12.000 | 305 |
| 14 | 356 | 21.000 | 533 | 12.000 | 305 |
| 16 | 457 | 23.000 | 584 | 12.000 | 305 |
| 18 | 457 | 25.000 | 635 | 16.000 | 406 |
| 20 | 508 | 27.000 | 686 | 16.000 | 406 |
| 22 | 559 | 29.000 | 737 | 16.000 | 406 |
| 24 | 610 | 31.000 | 787 | 16.000 | 406 |
| 26 | 660 | 33.000 | 838 | 16.000 | 406 |
| 28 | 711 | 35.000 | 889 | 16.000 | 406 |
| 30 | 762 | 37.000 | 940 | 16.000 | 406 |
| 32 | 813 | 39.000 | 991 | 16.000 | 406 |
| 34 | 864 | 41.000 | 1041 | 16.000 | 406 |
| 36 | 914 | 43.000 | 1092 | 16.000 | 406 |
| 38 | 965 | 45.000 | 1143 | 16.000 | 406 |
| 40 | 1016 | 47.000 | 1194 | 16.000 | 406 |
| 42 | 1067 | 49.000 | 1245 | 16.000 | 406 |
| 44 | 1118 | 51.000 | 1295 | 16.000 | 406 |
| 46 | 1168 | 53.000 | 1346 | 16.000 | 406 |
| 48 | 1219 | 55.000 | 1397 | 16.000 | 406 |

| GDPL4F | | | | | |
|--------|------|--------|------|--------|-----|
| I.D. | | A | | C | |
| in | mm | in | mm | in | mm |
| 6 | 152 | 18.000 | 457 | 12.000 | 305 |
| 8 | 203 | 20.000 | 508 | 12.000 | 305 |
| 10 | 254 | 22.000 | 559 | 12.000 | 305 |
| 12 | 305 | 24.000 | 610 | 12.000 | 305 |
| 14 | 356 | 26.000 | 660 | 12.000 | 305 |
| 16 | 406 | 28.000 | 711 | 12.000 | 305 |
| 18 | 457 | 30.000 | 762 | 16.000 | 406 |
| 20 | 508 | 32.000 | 813 | 16.000 | 406 |
| 22 | 559 | 34.000 | 864 | 16.000 | 406 |
| 24 | 610 | 36.000 | 914 | 16.000 | 406 |
| 26 | 660 | 38.000 | 965 | 16.000 | 406 |
| 28 | 711 | 40.000 | 1016 | 16.000 | 406 |
| 30 | 762 | 42.000 | 1067 | 16.000 | 406 |
| 32 | 813 | 44.000 | 1118 | 16.000 | 406 |
| 34 | 864 | 46.000 | 1168 | 16.000 | 406 |
| 36 | 914 | 48.000 | 1219 | 16.000 | 406 |
| 38 | 965 | 50.000 | 1270 | 16.000 | 406 |
| 40 | 1016 | 52.000 | 1321 | 16.000 | 406 |
| 42 | 1067 | 54.000 | 1370 | 16.000 | 406 |
| 44 | 1118 | 56.000 | 1422 | 16.000 | 406 |
| 46 | 1168 | 58.000 | 1473 | 16.000 | 406 |
| 48 | 1219 | 60.000 | 1524 | 16.000 | 406 |

GDP, GDPL, GDPL2F, GDPL4F:
 $B = A + 16$

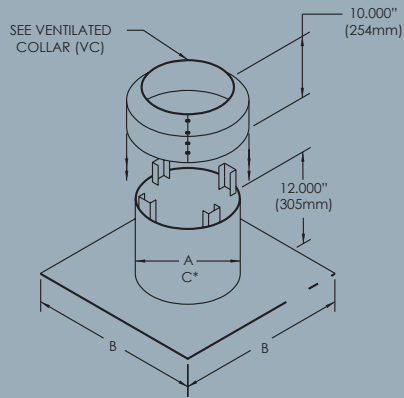
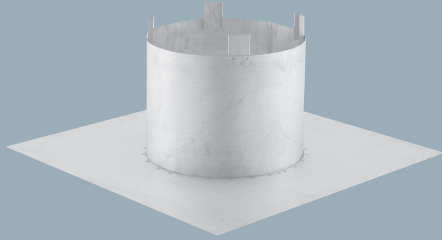
FLASHINGS

VENTILATED FLASHING • VF

Used to seal and ventilate the space between the chimney and the roof. It reduces the temperature around the roof opening and it prevents excessive accumulation of heat near combustible materials.

Includes:

- 1 Ventilated collar (VC)



| GDPL • GDPL2F | | | | | |
|---------------|------|--------|------|--------|------|
| I.D. | | A | | C | |
| in | mm | in | mm | in | mm |
| 6 | 152 | 14.000 | 356 | 20.000 | 508 |
| 8 | 203 | 16.000 | 406 | 22.000 | 559 |
| 10 | 254 | 18.000 | 457 | 24.000 | 610 |
| 12 | 305 | 20.000 | 508 | 26.000 | 660 |
| 14 | 356 | 22.000 | 559 | 28.000 | 711 |
| 16 | 457 | 24.000 | 610 | 30.000 | 762 |
| 18 | 457 | 26.000 | 660 | 32.000 | 813 |
| 20 | 508 | 28.000 | 711 | 34.000 | 864 |
| 22 | 559 | 30.000 | 762 | 36.000 | 914 |
| 24 | 610 | 32.000 | 813 | 38.000 | 964 |
| 26 | 660 | 34.000 | 864 | 40.000 | 1016 |
| 28 | 711 | 36.000 | 914 | 42.000 | 1068 |
| 30 | 762 | 38.000 | 964 | 44.000 | 1118 |
| 32 | 813 | 40.000 | 1016 | 46.000 | 1168 |
| 34 | 864 | 42.000 | 1067 | 48.000 | 1219 |
| 36 | 914 | 44.000 | 1118 | 50.000 | 1270 |
| 38 | 965 | 46.000 | 1168 | 52.000 | 1321 |
| 40 | 1016 | 48.000 | 1219 | 54.000 | 1372 |
| 42 | 1067 | 50.000 | 1270 | 56.000 | 1422 |
| 44 | 1118 | 52.000 | 1321 | 58.000 | 1473 |
| 46 | 1168 | 54.000 | 1372 | 60.000 | 1525 |
| 48 | 1219 | 56.000 | 1422 | 62.000 | 1575 |

| GDPL4F | | | | | |
|--------|------|--------|------|--------|------|
| I.D. | | A | | C | |
| in | mm | in | mm | in | mm |
| 6 | 152 | 18.000 | 457 | 24.000 | 610 |
| 8 | 203 | 20.000 | 508 | 26.000 | 660 |
| 10 | 254 | 22.000 | 559 | 28.000 | 711 |
| 12 | 305 | 24.000 | 610 | 30.000 | 762 |
| 14 | 356 | 26.000 | 660 | 32.000 | 813 |
| 16 | 406 | 28.000 | 711 | 34.000 | 864 |
| 18 | 457 | 30.000 | 762 | 36.000 | 914 |
| 20 | 508 | 32.000 | 813 | 38.000 | 965 |
| 22 | 559 | 34.000 | 864 | 40.000 | 1016 |
| 24 | 610 | 36.000 | 914 | 42.000 | 1068 |
| 26 | 660 | 38.000 | 965 | 44.000 | 1118 |
| 28 | 711 | 40.000 | 1016 | 46.000 | 1168 |
| 30 | 762 | 42.000 | 1067 | 48.000 | 1219 |
| 32 | 813 | 44.000 | 1118 | 50.000 | 1270 |
| 34 | 864 | 46.000 | 1168 | 52.000 | 1321 |
| 36 | 914 | 48.000 | 1219 | 54.000 | 1370 |
| 38 | 965 | 50.000 | 1270 | 56.000 | 1422 |
| 40 | 1016 | 52.000 | 1321 | 58.000 | 1473 |
| 42 | 1067 | 54.000 | 1370 | 60.000 | 1524 |
| 44 | 1118 | 56.000 | 1422 | 62.000 | 1575 |
| 46 | 1168 | 58.000 | 1473 | 64.000 | 1626 |
| 48 | 1219 | 60.000 | 1524 | 66.000 | 1676 |

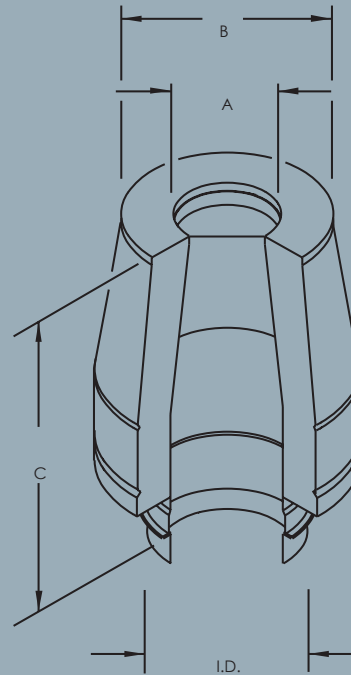
*With insulated sleeve(s)

TERMINATIONS

EXHAUST CONE • EC

Installed at the top of the chimney. It improves the draft and increases the speed of exhaust gases by 50%. Installation of a drain-tee cap (DC) or a drain section (DS) at the base of the chimney is required for use of an exhaust cone.

K = 1.25



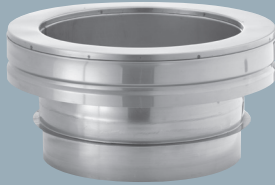
| GDPL • GDPL2F | | | | | | | |
|---------------|------|--------|------|--------|------|--------|------|
| I.D. | | A | | B | | C | |
| in | mm | in | mm | in | mm | in | mm |
| 6 | 152 | 5.000 | 127 | 9.000 | 229 | 17.750 | 451 |
| 8 | 203 | 7.000 | 178 | 11.000 | 279 | 17.750 | 451 |
| 10 | 254 | 8.000 | 203 | 12.000 | 305 | 17.750 | 451 |
| 12 | 305 | 10.000 | 254 | 14.000 | 356 | 17.750 | 451 |
| 14 | 356 | 12.000 | 305 | 16.000 | 406 | 23.500 | 497 |
| 16 | 406 | 14.000 | 356 | 18.000 | 457 | 23.500 | 497 |
| 18 | 457 | 16.000 | 406 | 20.000 | 508 | 23.500 | 497 |
| 20 | 508 | 16.000 | 406 | 20.000 | 508 | 23.500 | 497 |
| 22 | 559 | 18.000 | 457 | 22.000 | 559 | 23.500 | 497 |
| 24 | 610 | 20.000 | 508 | 24.000 | 610 | 23.500 | 497 |
| 26 | 660 | 22.000 | 559 | 26.000 | 660 | 29.500 | 749 |
| 28 | 711 | 24.000 | 610 | 28.000 | 711 | 29.500 | 749 |
| 30 | 762 | 24.000 | 610 | 28.000 | 711 | 29.500 | 749 |
| 32 | 813 | 26.000 | 660 | 30.000 | 762 | 35.500 | 902 |
| 34 | 864 | 28.000 | 711 | 32.000 | 813 | 35.500 | 902 |
| 36 | 914 | 30.000 | 762 | 34.000 | 864 | 35.500 | 902 |
| 38 | 965 | 30.000 | 762 | 34.000 | 864 | 41.500 | 1054 |
| 40 | 1016 | 32.000 | 813 | 36.000 | 914 | 41.500 | 1054 |
| 42 | 1067 | 34.000 | 864 | 38.000 | 965 | 41.500 | 1054 |
| 44 | 1118 | 36.000 | 914 | 40.000 | 1016 | 41.500 | 1054 |
| 46 | 1168 | 38.000 | 965 | 42.000 | 1067 | 41.500 | 1054 |
| 48 | 1219 | 40.000 | 1016 | 44.000 | 1118 | 41.500 | 1054 |

| GDPL4F | | | | | | | |
|--------|------|--------|------|--------|------|--------|------|
| I.D. | | A | | B | | C | |
| in | mm | in | mm | in | mm | in | mm |
| 6 | 152 | 5.000 | 127 | 13.000 | 330 | 17.750 | 451 |
| 8 | 203 | 7.000 | 178 | 15.000 | 381 | 17.750 | 451 |
| 10 | 254 | 8.000 | 203 | 16.000 | 406 | 17.750 | 451 |
| 12 | 305 | 10.000 | 254 | 18.000 | 457 | 17.750 | 451 |
| 14 | 356 | 12.000 | 305 | 20.000 | 508 | 23.500 | 497 |
| 16 | 406 | 14.000 | 356 | 22.000 | 559 | 23.500 | 497 |
| 18 | 457 | 16.000 | 406 | 24.000 | 610 | 23.500 | 497 |
| 20 | 508 | 16.000 | 406 | 24.000 | 610 | 23.500 | 497 |
| 22 | 559 | 18.000 | 457 | 26.000 | 660 | 23.500 | 497 |
| 24 | 610 | 20.000 | 508 | 26.000 | 711 | 23.500 | 497 |
| 26 | 660 | 22.000 | 559 | 30.000 | 762 | 29.500 | 749 |
| 28 | 711 | 24.000 | 610 | 32.000 | 813 | 29.500 | 749 |
| 30 | 762 | 24.000 | 610 | 32.000 | 813 | 29.500 | 749 |
| 32 | 813 | 26.000 | 660 | 34.000 | 864 | 35.500 | 902 |
| 34 | 864 | 28.000 | 711 | 36.000 | 914 | 35.500 | 902 |
| 36 | 914 | 30.000 | 762 | 38.000 | 965 | 35.500 | 902 |
| 38 | 965 | 30.000 | 762 | 38.000 | 965 | 41.500 | 1054 |
| 40 | 1016 | 32.000 | 813 | 40.000 | 1016 | 41.500 | 1054 |
| 42 | 1067 | 34.000 | 864 | 42.000 | 1067 | 41.500 | 1054 |
| 44 | 1118 | 36.000 | 914 | 44.000 | 1118 | 41.500 | 1054 |
| 46 | 1168 | 38.000 | 965 | 46.000 | 1168 | 41.500 | 1054 |
| 48 | 1219 | 40.000 | 1016 | 48.000 | 1219 | 41.500 | 1054 |

TERMINATIONS AND ADAPTER

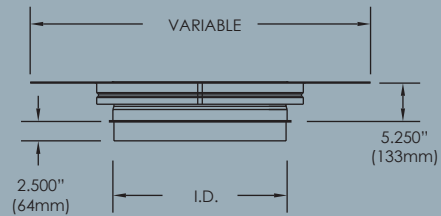
CLOSURE SECTION • CS

Installed at the top of the chimney. It protects the chimney against water infiltration in the insulation between the inner and outer wall of the chimney. Installation of a drain-tee cap (DC) or a drain section (DS) at the base of the chimney is required for use of a closure section.



FAN ADAPTER • FA

Installed at the chimney termination. Used to connect the chimney to an induced draft fan.

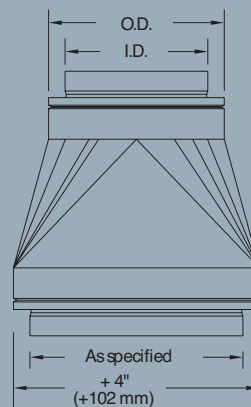


TRANSITION ADAPTER (TA)

Used to connect the grease duct or conduit to the hood outlet. This rectangular to round or round to round transition may be manufactured in accordance with the sizes specified.

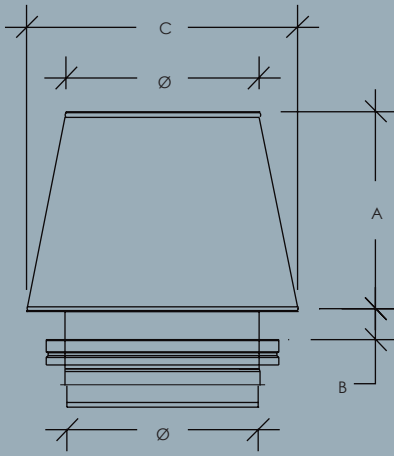
Includes:

- 1 Assembly band (AB)
- 1 Finishing band (FB)

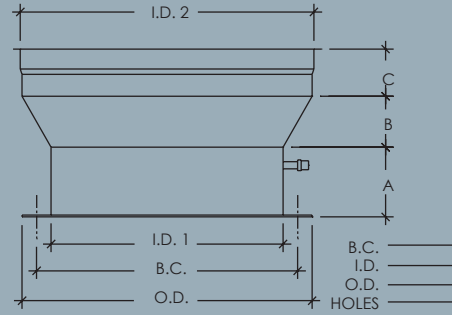


SPECIAL PARTS

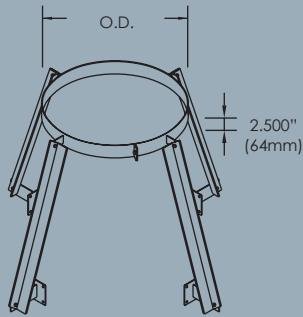
Several special parts are available upon request. See some examples below.



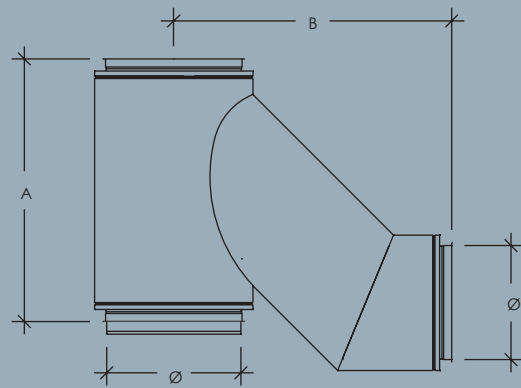
Finishing Cone



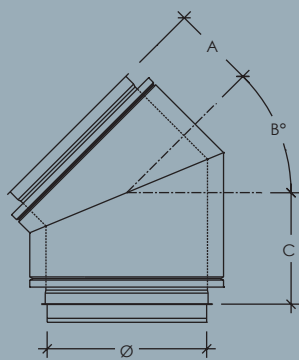
Special Starting Adapter



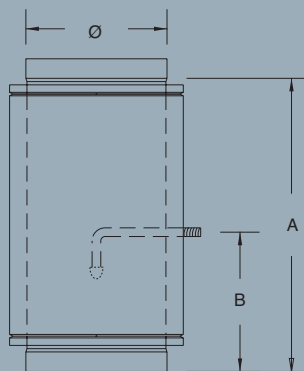
Roof band



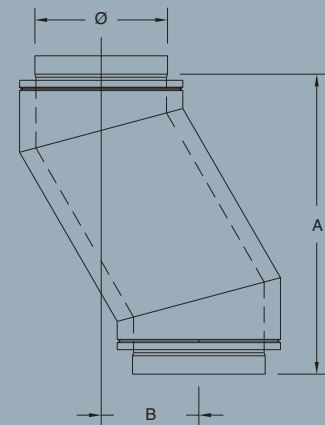
Combination Tee and Elbow



Special Elbow



Nozzle Section with Sprinkler



Offset one piece

INSTALLATION GUIDE

Guide to Component Parts

| MATERIALS | CODE | PAGE |
|--------------------------------|---------|------|
| JOINTING | | |
| Assembly Band | AB | 17 |
| Finishing Band | FB | FB |
| LENGTH | | |
| 12" Length | 12L | 9 |
| 24" Length | 24L | 9 |
| 36" Length | 36L | 9 |
| 48" Length | 48L | 9 |
| CONNECTION / OFFSET | | |
| 5° Elbow | E5 | 13 |
| 15° Elbow | E15 | 13 |
| 30° Elbow | E30 | 14 |
| 45° Elbow | E45 | 14 |
| 90° Elbow | 2 x E45 | 15 |
| 90° Short Radius Elbow | E90 | 15 |
| 45° Tee | T45 | 11 |
| 90° Tee | T90 | 11 |
| Grease Duct Tee | GT90 | 11 |
| FIRE PROTECTION | | |
| Firestop | FS | 20 |
| Insulated Sleeve | IS | 22 |
| Insulated Wall Firestop | IFS | 21 |
| Radiant Firestop | RFS | 21 |
| Wall Firestop | WFS | 21 |
| ADJUSTEMENT / EXPANSION | | |
| Adjustable Length | AL | 10 |
| Variable Length | VL | 10 |
| Increaser | I | 16 |
| Reducer | R | 16 |

SIDE STABILITY

| | | |
|---------------|-----|----|
| Wall band | WB | 22 |
| Guy Wire Band | GWB | 23 |

CONNECTING THE FLUE

| | | |
|--------------------|----|----|
| Transition Adapter | TA | 10 |
| Nozzle Section | NS | 10 |
| Tee Cap | TC | 17 |
| Drain Tee Cap | DC | 17 |

SEALING AT ROOF

| | | |
|------------------------|----|----|
| Adjustable Flashing | AF | 23 |
| Flashing for Flat Roof | F | 24 |
| Ventilated Flashing | VF | 24 |

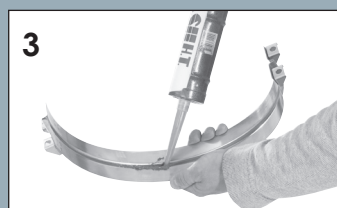
SUPPORT / GUIDE

| | | |
|--------------------|----|----|
| Anchor Plate | AP | 20 |
| Floor Guide | FG | 20 |
| Guiding Spacer | GS | 20 |
| Hanger Bracket | HB | 18 |
| Horizontal Support | HS | 19 |
| Roof Support | RS | 18 |
| Suspension Band | SB | 22 |
| Wall Guide | WG | 19 |
| Wall Support | WS | 18 |

TERMINATIONS

| | | |
|-----------------|----|----|
| Fan Adapter | FA | 26 |
| Exhaust Cone | EC | 25 |
| Closure section | CS | 26 |

PIPE AND FITTING JOINT ASSEMBLY, STEP BY STEP



1. All components have a male and a female end. The orientation is indicated on the labelling of each section with an arrow. The arrow indicates the direction of the flue.
2. Before fitting the large and small ends into one another, a sealant (LTS) is applied on the inside circumference of the larger end.
3. Assemble both sections by sliding one section into the other until the flanges meet. A layer of sealant is applied inside the V-Groove of the Assembly band (AB) prior to its installation over the joint.
4. The Assembly Band (AB) is installed and clamped in place with 4 nuts and bolts (supplied).
5. Insert the insulation strip around the inner joint assembly of insulated models GDPL2F.
6. The Finishing Band (FB) is installed by slipping the edges of the band into the outer pipe edges and clamping them with 3 nuts and bolts (supplied).



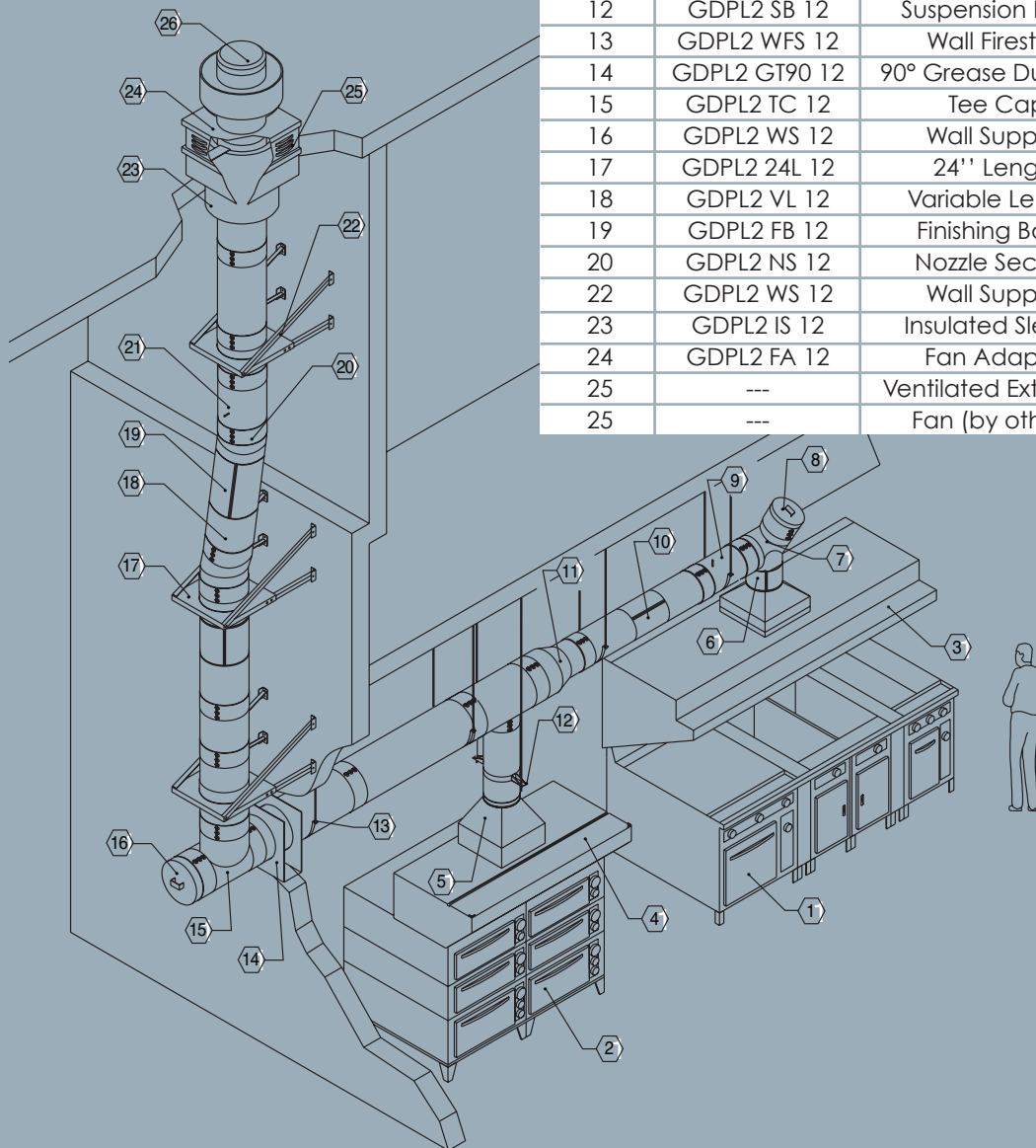
- LTS:** Low Temperature Sealant. 600°F maximum flue gas temperature
- HTS:** High Temperature Sealant. Up to 2000°F flue gas temperature
- ES:** Exterior Sealant. Outer sealant weather proof

7. FOR OUTDOOR INSTALLATION AND BAD WEATHER PROTECTION, AN EXTERIOR SEALANT (ES) IS APPLIED AT THE JOINT BETWEEN THE FINISHING BAND (FB) AND THE OUTER WALL OF THE CHIMNEY.

GREASE DUCT SYSTEM

Sample Drawings

| No. | part No. | Description | page |
|-----|---------------|-----------------------|------|
| 1 | --- | Appliance (By others) | --- |
| 2 | --- | Appliance (by others) | --- |
| 3 | --- | Exhaust Hood | --- |
| 4 | --- | Exhaust Hood | --- |
| 5 | GDPL2 TA 12 | Transition Adapter | 36 |
| 6 | GDPL2 AL 12 | Adjustable Length | 10 |
| 7 | GDPL2 W90 12 | 90° Wye | 15 |
| 8 | GDPL2 TC 12 | Tee Cap | 22 |
| 9 | GDPL2 NS 12 | Nozzle Section | 10 |
| 10 | GDPL2 VL 12 | Variable Length | 10 |
| 11 | GDPL2 I 12 | Increaser | 21 |
| 12 | GDPL2 SB 12 | Suspension Band | 31 |
| 13 | GDPL2 WFS 12 | Wall Firestop | 29 |
| 14 | GDPL2 GT90 12 | 90° Grease Duct Tee | 13 |
| 15 | GDPL2 TC 12 | Tee Cap | 22 |
| 16 | GDPL2 WS 12 | Wall Support | 24 |
| 17 | GDPL2 24L 12 | 24'' Length | 9 |
| 18 | GDPL2 VL 12 | Variable Length | 10 |
| 19 | GDPL2 FB 12 | Finishing Band | 22 |
| 20 | GDPL2 NS 12 | Nozzle Section | 10 |
| 22 | GDPL2 WS 12 | Wall Support | 24 |
| 23 | GDPL2 IS 12 | Insulated Sleeve | 30 |
| 24 | GDPL2 FA 12 | Fan Adapter | 36 |
| 25 | --- | Ventilated Extension | 37 |
| 25 | --- | Fan (by others) | --- |

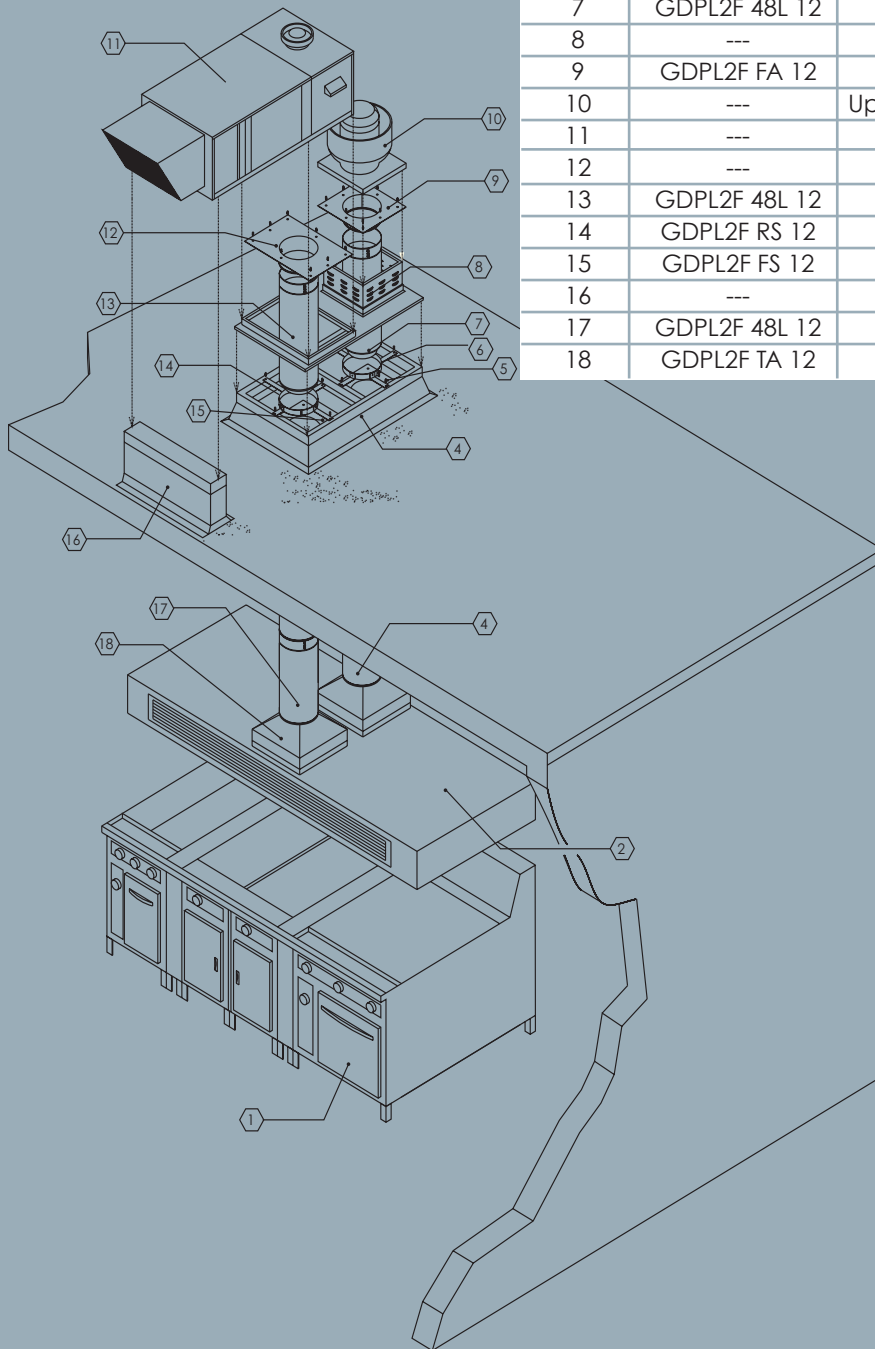


Up-Blast Fan Exhaust System

GREASE DUCT SYSTEM

Sample Drawings

| No. | part No. | Description | page |
|-----|---------------|----------------------------------|------|
| 1 | --- | Appliance (By others) | --- |
| 2 | --- | Exhaust Hood | --- |
| 3 | GDPL2F WG 12 | Wall Guide | 27 |
| 4 | --- | Roof Curb | --- |
| 5 | GDPL2F FS 12 | Firestop | 29 |
| 6 | GDPL2F RS 12 | Roof Support | 23 |
| 7 | GDPL2F 48L 12 | 48'' Length | 10 |
| 8 | --- | Ventilated Curb Extension | --- |
| 9 | GDPL2F FA 12 | Fan Adapter | 36 |
| 10 | --- | Up-blast Exhaust Fan (By others) | --- |
| 11 | --- | Make-up Unit (By others) | --- |
| 12 | --- | Supply Fan Adapter | --- |
| 13 | GDPL2F 48L 12 | 48'' Length | 10 |
| 14 | GDPL2F RS 12 | Roof Support | 23 |
| 15 | GDPL2F FS 12 | Firestop | 29 |
| 16 | --- | System Support | --- |
| 17 | GDPL2F 48L 12 | 48'' Length | 10 |
| 18 | GDPL2F TA 12 | Transition Adapter | 36 |



Make-up Air supply / Exhaust System

1-YEAR STANDARD WARRANTY

Models GDP, GDPL, GDPL2F and GDPL4F

All components of our models GDP, GDPL, GDPL2F and GDPL4F chimney system have been inspected in our workshop in accordance with our quality standards. Cheminée Lining.e inc. warrants the chimney/exhaust system and components against defects in material and workmanship for a period of (1) one year from date of delivery to the purchaser. During this period, any system or component supplied by Cheminée Lining.e inc. failing to perform its intended function of exhausting, without adverse leakage, combustion by-products from engine or heating appliance will be repaired or replaced at the manufacturer option.

This warranty is limited to repair or replacement of any component which has been proven defective by a factory-authorized inspector by Cheminée Lining.e inc. This warranty does not cover any labour cost or freight charge for removal or replacement of the defective product, nor does this warranty cover any system component not furnished by Cheminée Lining.e inc. and installed as part of the system. The warranty on any repaired or replacement component shall be for a duration no longer than the remaining or unexpired term of the original warranty.

This standard warranty is subject to the following conditions:

- a) Generally accepted engineering practices have been followed to determine that sizing and material specifications are suitable for the application and environment involved.
- b) The undamaged components have been correctly installed in accordance with the installation instructions published by Cheminée Lining.e inc. at the time of shipment.

The standard warranty is extended to a **15-YEAR LIMITED WARRANTY** provided the following conditions are satisfied:

- a) The chimney must have been connected to an appliance listed by a testing authority recognized by the federal government. Also, this warranty is void if the appliance was not installed, used and maintained according to the manufacturer instructions.
- b) The chimney system must have been designed and sized by the engineering department of Cheminée Lining.e inc. All design and operating parameters provided to Cheminée Lining.e inc. must meet the standards of Cheminée Lining.e inc. and must be accurately representative of the operating conditions.
- c) The undamaged components must have been correctly installed, used and maintained in accordance with the instructions published by Cheminée Lining.e inc. at the time of shipment.
- d) Air used in combustion must be free from any solvent or refrigerant vapor and from any halogenated compound which might generate acid condensate within the flue or chimney.
- e) Cheminée Lining.e inc. has supplied the entire chimney or exhaust system from the appliance outlet to the stack termination.
- f) Prior to start-up and thereafter, exposed galvanized and aluminized steel surfaces are at all times protected with a minimum of one base coat primer and one finish coat of heat and corrosion resistant paint.

In no event shall Cheminée Lining.e inc. be liable for any incidental or consequential damages of any kind or for any damage resulting in whole or in part from misuse, improper installation, removal and/or reuse of components or inadequate maintenance of the system or any component part thereof. In no event shall Cheminée Lining.e inc. be liable for any cost of installation, removal and reinstallation. Cheminée Lining.e inc. assumes no liability in case of fire, chimney fire, lightning or act of God. This warranty is in lieu of all other express warranties or guarantees of any kind. All implied warranties, including merchantability and fitness, are limited to the duration of the express warranty contained herein. Cheminée Lining.e inc. neither assumes nor authorizes any other person to assume on its behalf any other liability in connection with products sold. No agent is authorized to make any modification to this warranty or additional warranties, even if in writing, binding Cheminée Lining.e inc.

The purchaser or complainant must send all claims under this warranty in writing to Cheminée Lining.e inc. Customer Service Department.

Warranty

Products and Services



Factory-built Positive Pressure Piping System

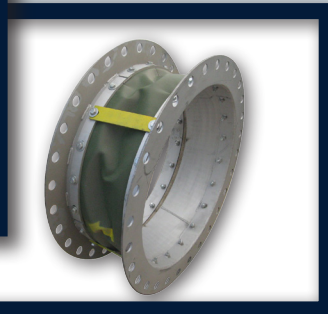
- Boiler and Engine Exhaust
- Special gas vents
- Restaurant Grease Duct

Freestanding Steel Stacks

- Breeching Systems

MODELS

- STS • STS2 • STS3 • STSR



Accessories

- Control Dampers
- Expansion Joints

Professional Services

- Engineering Services
- Quality Control
- Reliable Delivery
- Tests Facilities
- Research and development
- Sales and Customer services
- CAD design
- Distribution Network in Canada and in the US

