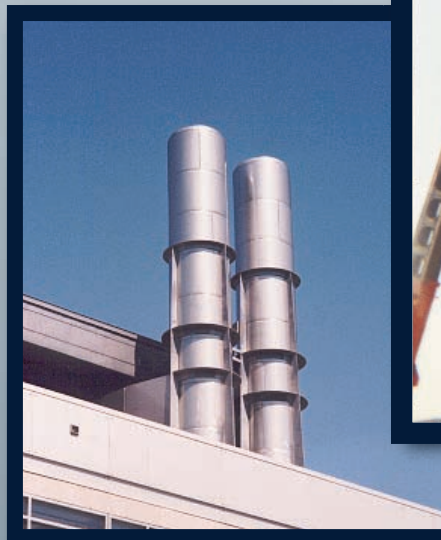


Lining CHEMINÉE

Industrial Freestanding Stacks & Breeching Systems

Models

**STS, STS2
STS3 & STSR**



Cheminée Lining

specializes in industrial and commercial chimneys. We have more than 15 years experience and our principles, based on business integrity, first class customer service, reliable delivery and complete engineering services, have established our reputation as a market leader for the supply of chimneys and gas venting products.

DESIGN AND CONSTRUCTION

Cheminée Lining can provide you with the design and manufacture of freestanding stacks according to Canadian and American standards requirements.

Our highly qualified engineering department has diversified experience and knowledge in exhausting and venting stacks. They have developed specialized design systems for highly efficient results on sizing analysis and CAD design.

Designs are based on specific criteria like exhaust combustion products, thermal and chemical conditions, corrosion effects, structural analysis including wind load analysis, seismic calculations and vortex induced load analysis.

We can provide you with custom design solutions for every application. Let us guide you in selecting the right model for your specific application and in proposing appropriate composition, shape and jointing method to offer you the best technical and economical solutions.

Cheminée Lining is proud of the knowledge and the qualifications of their employees. Our staff is highly qualified in designing and manufacturing stacks according to strict ASME and CSA design and fabrication criteria.



MATERIALS

Several materials can be used in freestanding stacks. The structural shell can be made of carbon steel, Cor-Ten steel or stainless steel, depending upon specifications or analysis results requirements.

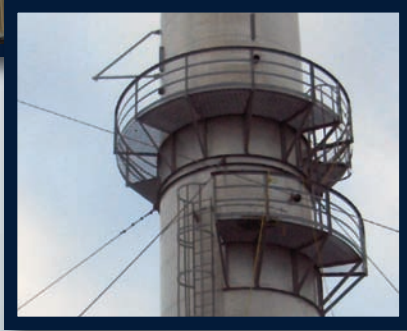
The insulation products commonly used are high temperature mineral fibre, ceramic fibre, airspace and refractory.

When applicable, metal jackets can be used to cover and protect the insulation. These are usually made of aluminum or stainless steel.

ACCESSORIES

Depending upon the application or specifications, several accessories can be provided for design or safety purposes.

- ▶ Access door
- ▶ Platform
- ▶ Lightning protection
- ▶ Guy-wires
- ▶ Stack drainage
- ▶ Spoiler and other anti-vortex equipment
- ▶ Safety climbing device with fall prevention system
- ▶ Exhaust cone
- ▶ Test ports
- ▶ Structural stiffeners
- ▶ Special anchoring
- ▶ Safety ladder
- ▶ FAA aircraft day & night warning system
- ▶ CEMS monitoring system



BREECHING AND OTHER SERVICES

Cheminée Lining also specializes in design and manufacture of custom ducting and breaching systems. These factory-built ductworks can be provided in the same materials as the stack models or as specified and they can be designed for various on site jointing methods.

Multiple other services are offered, including:

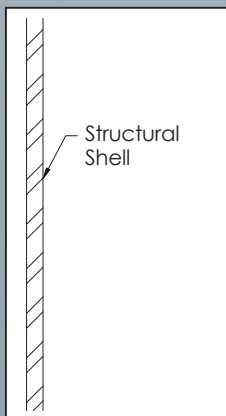
- ▶ Expansion joint design and fabrication
- ▶ Control dampers design and fabrication
- ▶ Concrete pad and footing design
- ▶ Sandblasting of stacks and ducting
- ▶ Corrosion resistant painting
- ▶ Complete specifications and drawings
- ▶ Design and fabrication of stainless steel welded lining
- ▶ Design and fabrication of temporary stacks
- ▶ Transportation services



MODELS

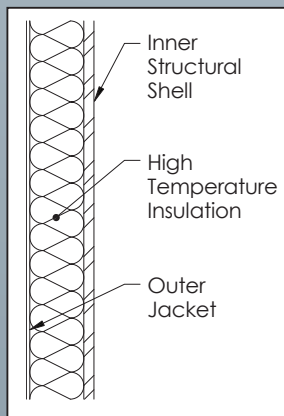
Following many years of experience in designing and manufacturing of freestanding steel stacks, we have developed four models corresponding to industry standard requirements for chimney and venting systems.

STS



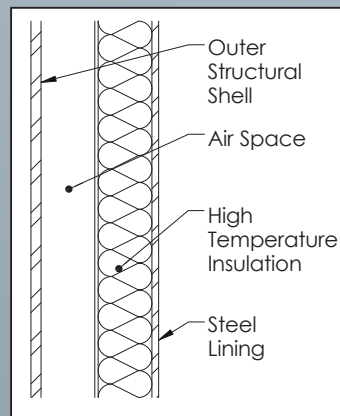
Single structural shell

STS2



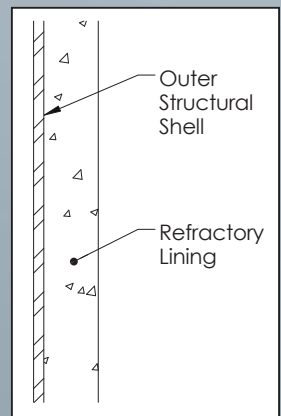
Inner structural shell with insulation and outer metal jacket

STS3



Outer structural shell with air space, insulation and steel lining

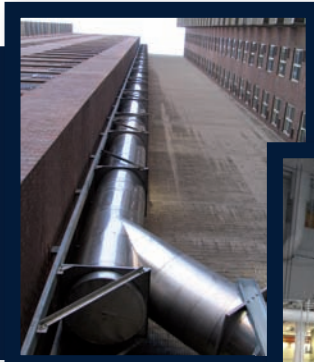
STSR



Outer structural shell with refractory lining

Products and Services

Products and Services



Factory-built Positive Pressure Piping System

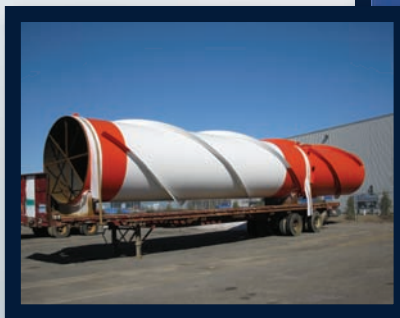
- Boiler and Engine Exhaust
- Special gas vents
- Restaurant Grease Duct

Freestanding Steel Stacks

- Breeching Systems

MODELS

- STS • STS2 • STS3 • STSR

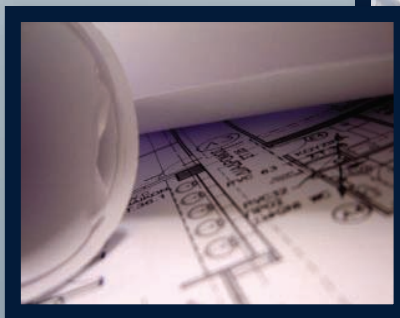


Accessories

- Control Dampers
- Expansion Joints

Professional Services

- Engineering Services
- Quality Control
- Reliable Delivery
- Tests Facilities
- Research and development
- Sales and Customer services
- CAD design
- Distribution Network in Canada and in the US



545, Fernand-Poitras, Terrebonne, Qc, CANADA J6Y 1Y5
Tél.: 450 625.6060 • 1 866 625.6060 • Téléc.: 450 625.8170
www.chemineelining.com • sales@chemineelining.com

CHEMINÉE
Lining